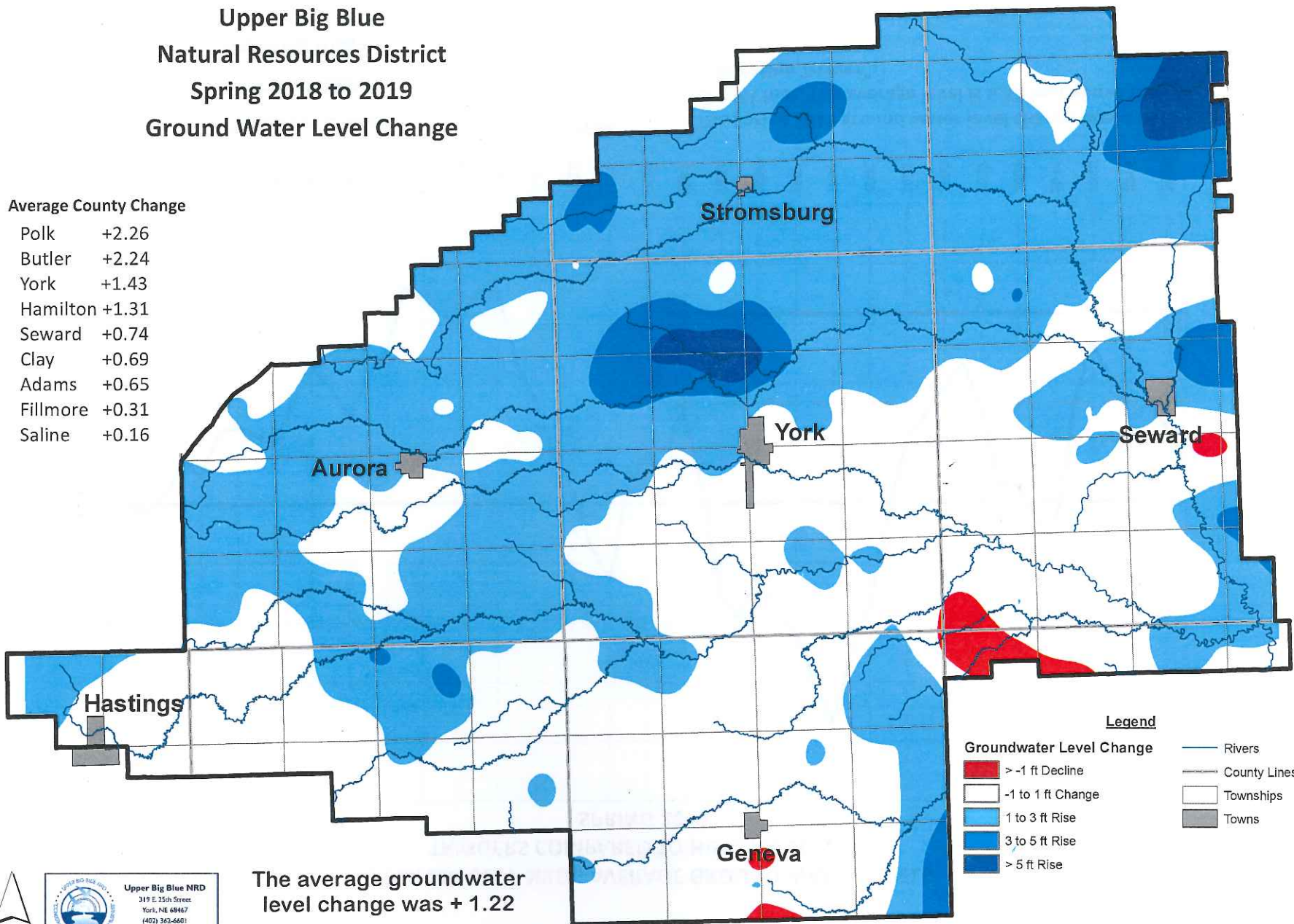


Upper Big Blue
Natural Resources District
Spring 2018 to 2019
Ground Water Level Change

Average County Change

| | |
|----------|-------|
| Polk | +2.26 |
| Butler | +2.24 |
| York | +1.43 |
| Hamilton | +1.31 |
| Seward | +0.74 |
| Clay | +0.69 |
| Adams | +0.65 |
| Fillmore | +0.31 |
| Saline | +0.16 |



Legend

| | |
|---------------------------------|------------------|
| Groundwater Level Change | — Rivers |
| > -1 ft Decline | --- County Lines |
| -1 to 1 ft Change | □ Townships |
| 1 to 3 ft Rise | ■ Towns |
| 3 to 5 ft Rise | |
| > 5 ft Rise | |

The average groundwater level change was + 1.22



Upper Big Blue NRD
319 E. 25th Street
York, NE 68467
(402) 362-6401
www.upperbigblue.org