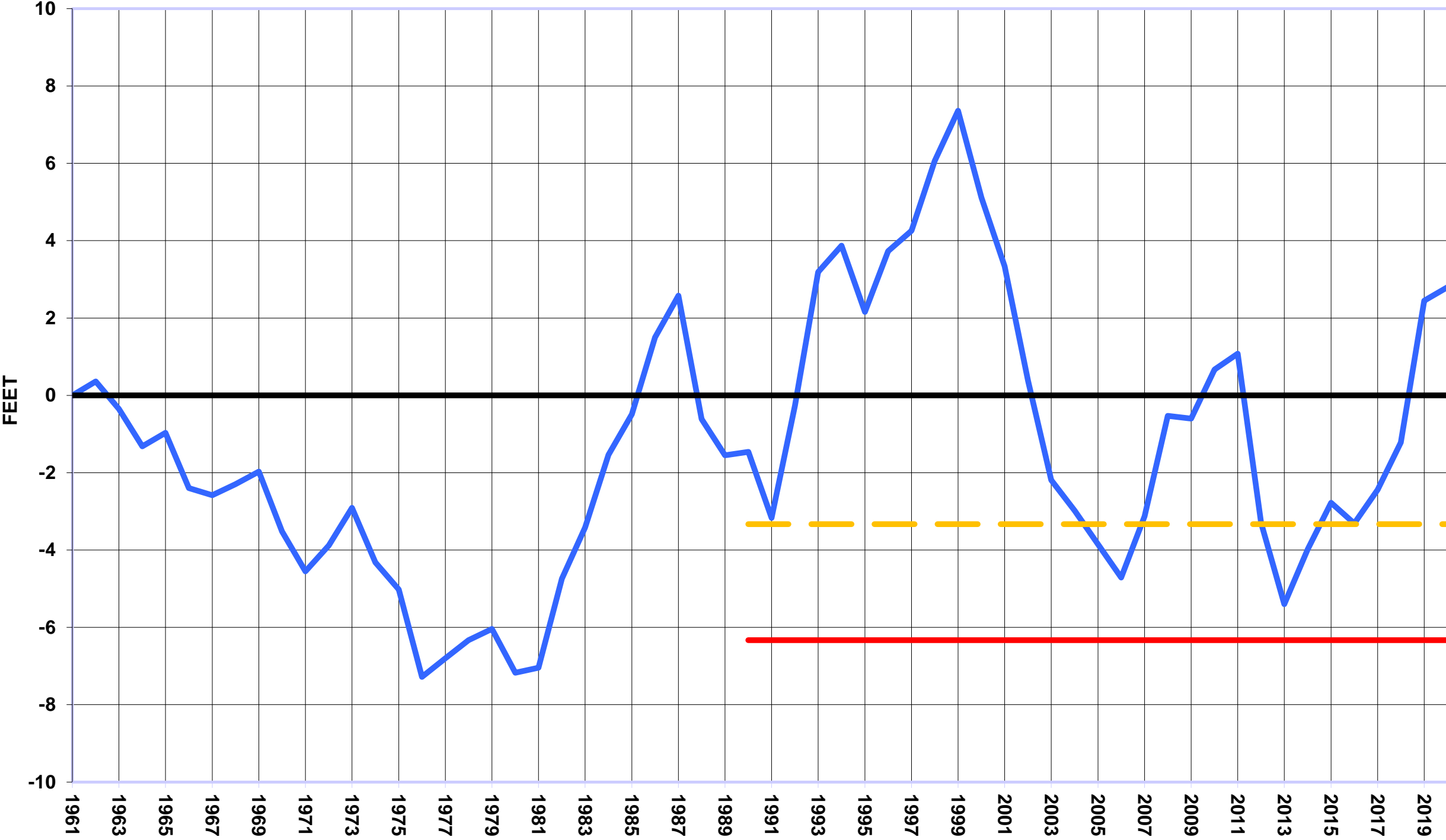


**UPPER BIG BLUE NRD - AVERAGE GROUND WATER LEVELS
TRIGGERS COMPARED TO HISTORIC LEVELS
SPRING 2021**



- Cumulative Change
- Allocation Trigger
- - - Reporting Trigger

The Spring 2021 ground water level change was a rise of 0.35 feet. The average level is 9.13 feet above the "Allocation Trigger".