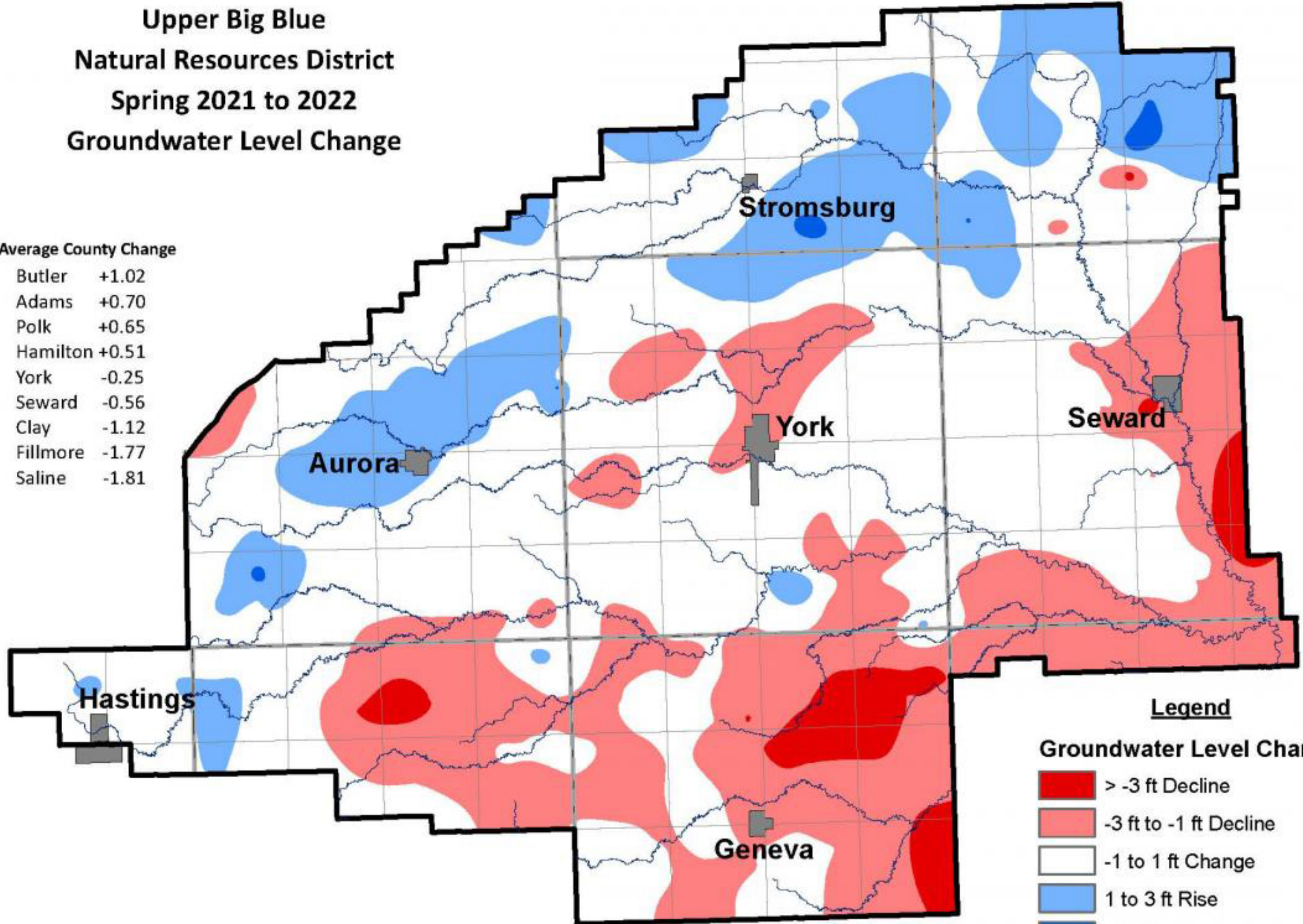


**Upper Big Blue
Natural Resources District
Spring 2021 to 2022
Groundwater Level Change**

Average County Change

Butler	+1.02
Adams	+0.70
Polk	+0.65
Hamilton	+0.51
York	-0.25
Seward	-0.56
Clay	-1.12
Fillmore	-1.77
Saline	-1.81



Legend

Groundwater Level Change

- > -3 ft Decline
- 3 ft to -1 ft Decline
- 1 to 1 ft Change
- 1 to 3 ft Rise
- > 3 ft Rise
- Rivers
- Counties

The average groundwater level change was - 0.24 Feet (decline)

