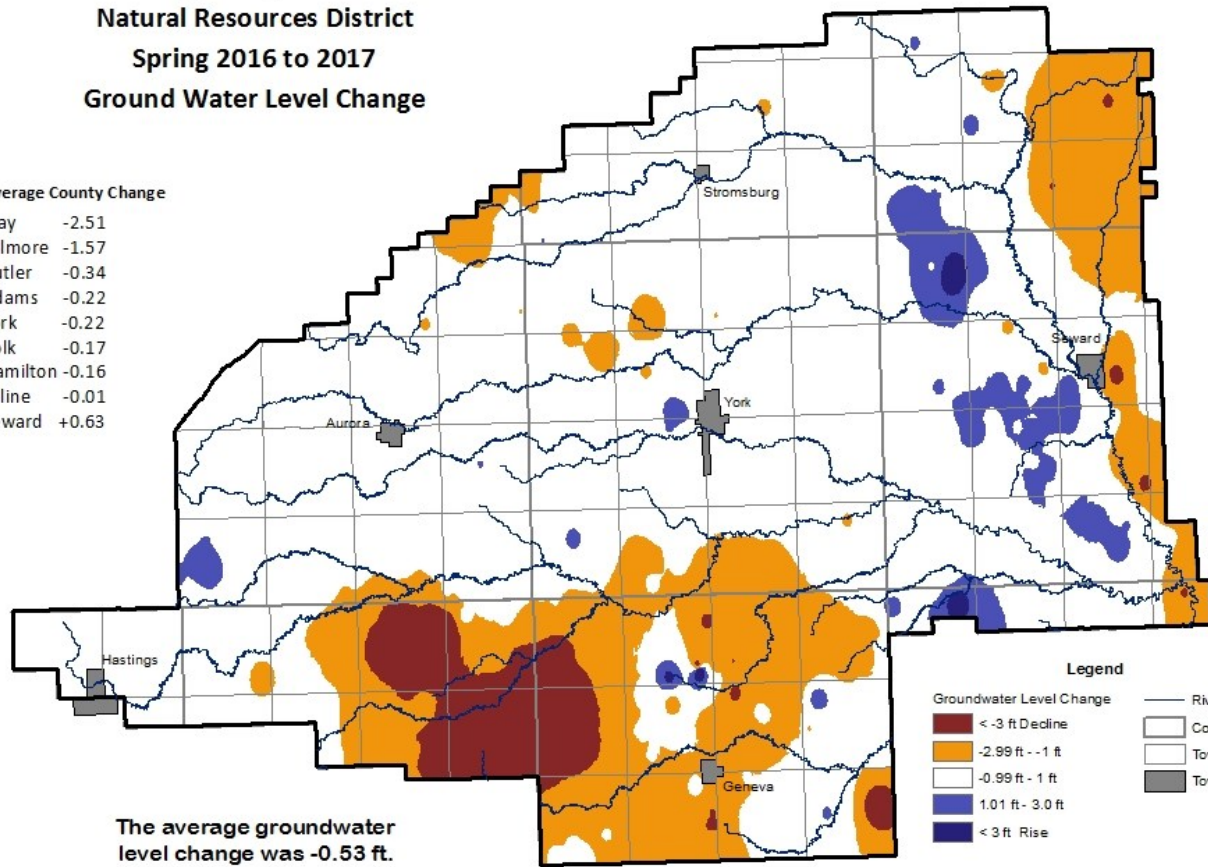


**Upper Big Blue  
Natural Resources District  
Spring 2016 to 2017  
Ground Water Level Change**

**Average County Change**

Clay	-2.51
Fillmore	-1.57
Butler	-0.34
Adams	-0.22
York	-0.22
Polk	-0.17
Hamilton	-0.16
Saline	-0.01
Seward	+0.63



**The average groundwater level change was -0.53 ft.**

**Legend**

<span style="display:inline-block; width:15px; height:15px; background-color:darkred; border:1px solid black;"></span> < -3 ft Decline	Rivers
<span style="display:inline-block; width:15px; height:15px; background-color:orange; border:1px solid black;"></span> -2.99 ft - -1 ft	County
<span style="display:inline-block; width:15px; height:15px; background-color:white; border:1px solid black;"></span> -0.99 ft - 1 ft	Townships
<span style="display:inline-block; width:15px; height:15px; background-color:blue; border:1px solid black;"></span> 1.01 ft - 3.0 ft	Towns
<span style="display:inline-block; width:15px; height:15px; background-color:darkblue; border:1px solid black;"></span> < 3 ft Rise	