

Overland Trails



Overland Trail Recreation Area

The Overland Trail Recreation Area, located 2.0 miles east and 1.0 mile south of York, features a 14.5-surface-acre lake which stores 121 acre feet of water.

The site was named for the nearby Overland Trail, which during the 1860's, was a spur off the Oregon Trail. The primary purposes of the dam and reservoir were designed to provide flood control, aquifer recharge and recreational opportunities. Camping, picnicking, and hiking are permitted in designated areas. Boating and canoeing are also allowed along with skiing, sledding, tobogganing, snowshoeing, snowmobiling and ice skating. Development at the facility remains limited to preserve wildlife habitat.



LOCATION MAP

Oxbow Trail

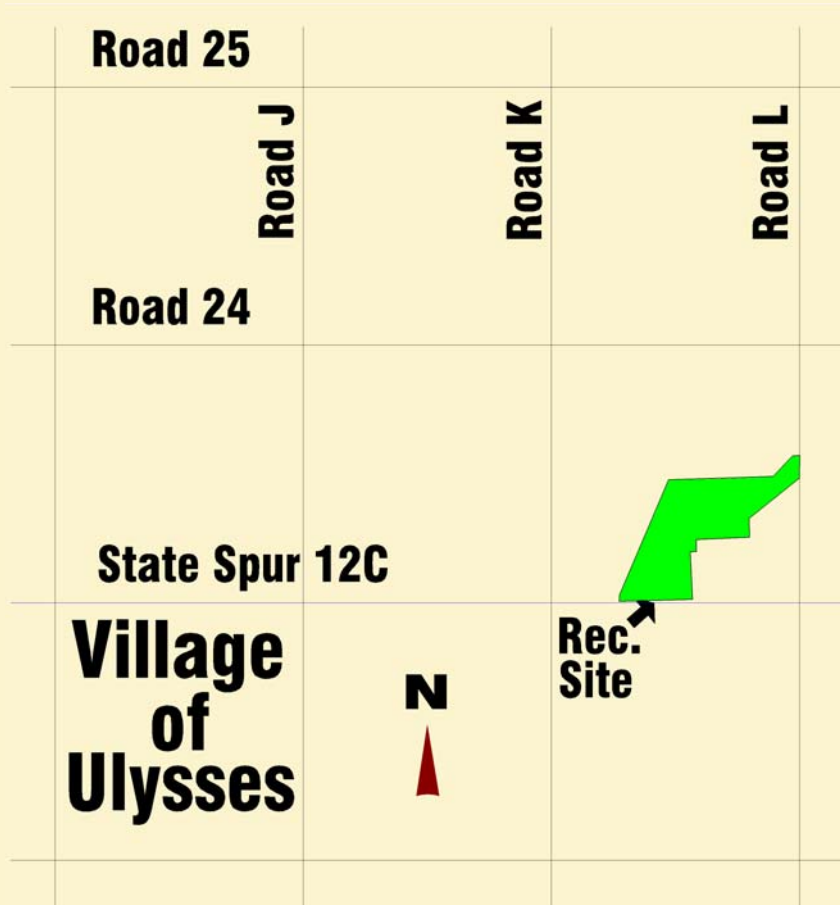


Oxbow Trail Recreation Area

Constructed in 1998, the Oxbow Trail Recreation Area is located 1.5 miles east of Ulysses, Nebraska, and features a 43-surface-acre lake which can store 274 acre feet of water.

Named for the nearby Oxbow Trail used by pioneers during the mid-1850s, the dam and reservoir was designed to provide flood control, wildlife habitat and recreation. The lake's water source is supplied by rainfall and underground springs. A fishing jetty is accessible on the west side of the lake along with a boat ramp and dock.

The recreation area is open to hiking and camping. The trapping of furbearers is permitted during the allowable hunting and trapping season. A picnic shelter and tables are also available.



LOCATION MAP

Pioneer Trails



Pioneer Trails Recreation Area

The Pioneer Trails Recreation Area, located 1.25 miles east and 1.0 mile north of Aurora, Nebraska, features a 43-surface-acre lake which can store 277 acre feet of water.

Constructed on a tributary of Lincoln Creek in 1986, the project was designed to provide flood control, aquifer recharge, wildlife habitat and recreational opportunities.

Target shooting is prohibited; Discharging center-fire and rim-fire rifles, handguns, and muzzle-loading firearms are prohibited unless a special trapping permit is issued by the District; Hunting is prohibited on the south 250 feet on the lands located in the SW 1/4 of Section 26 designated for public use.



LOCATION MAP

Bruce L. Anderson - Recharge Lake



Bruce L. Anderson Recreation Area (Recharge Lake)

The Bruce L. Anderson Recreation Area, named for longtime NRD Director and conservation advocate, is located 1.75 miles west of York, Nebraska on 4th Street, and features a 49-surface-acre lake which stores 310 acre feet of water on a tributary of Beaver Creek.

Constructed in 1990, for a five-year groundwater recharge study, the lake is now used primarily for recreation. A boat dock and ramp is accessible on the east side of the lake. Hunting is prohibited. However, an Archery Range used for target practice is located to the east of "Road K".

Facilities at the site include picnic tables, cooking grills, fire rings, hiking trails and playground equipment. A picnic shelter is located near the north parking lot.



LOCATION MAP

Smith Creek

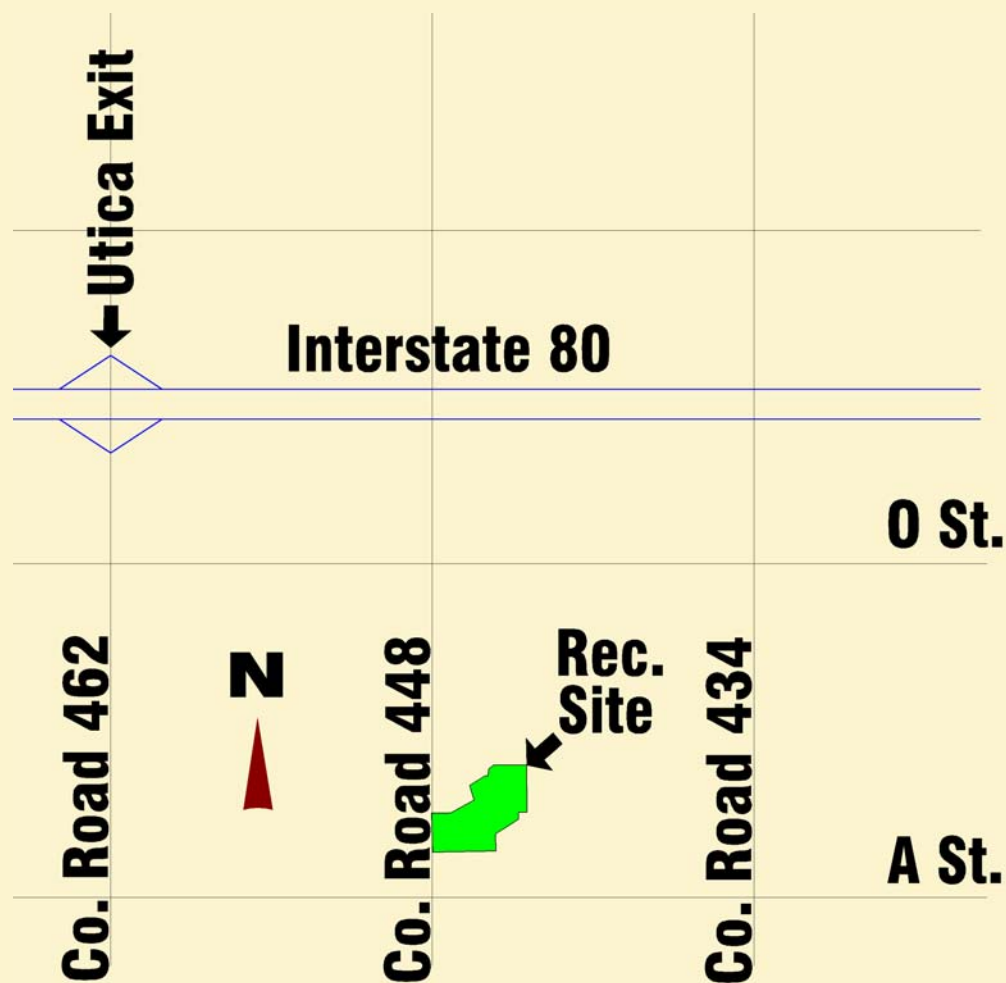


Smith Creek Recreation Area

The Smith Creek Recreation Area, located 1.25 miles south and 1.0 mile east of the Utica, Nebraska interchange off Interstate 80, features a 21.9-surface-acre lake which stores 142 acre feet of water.

Constructed in 1983, the Smith Creek dam and reservoir was designed primarily to provide aquifer recharge and recreational opportunities.

Waterfowl hunting is permitted within the boundaries of the Smith Creek Recreation Area. Facilities at the site include a picnic shelter and tables, cooking grills and fire rings, as well as a hand pump and a wooden footbridge across the spillway on the west side of the lake.



LOCATION MAP