

**LEGEND**

- Access Road
- Parking
- Rest Room
- Boat Ramp
- Boat Dock
- Hiking
- Fishing
- Tent Camping
- Picnic Shelter
- Playground
- Wildlife Viewing
- Archery Range

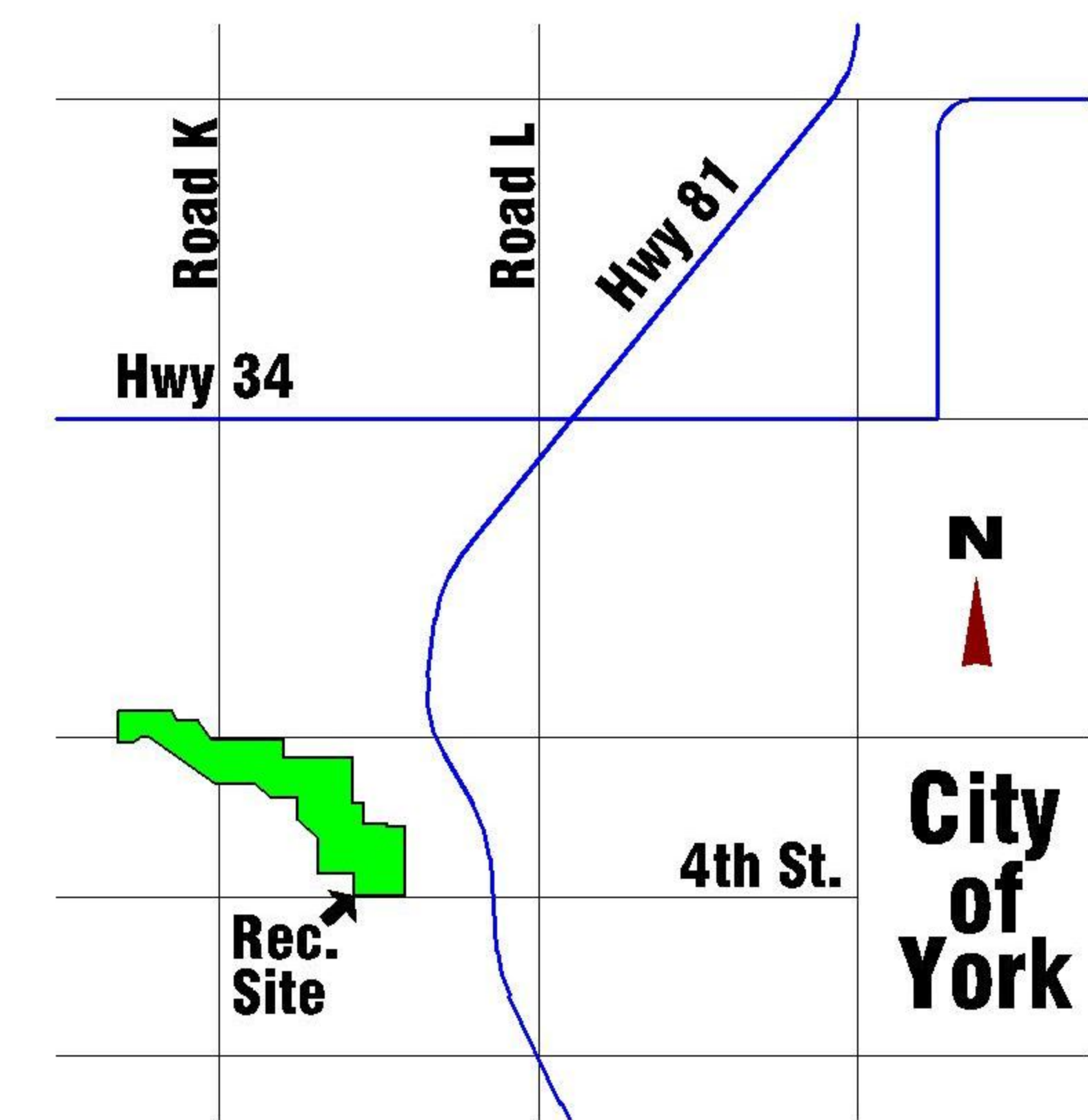
Map Revised July 5, 2007

**FAST FACTS**

The Bruce L. Anderson Recreation Area, named for longtime NRD Director and conservation advocate, is located 1.75 miles west of York, Nebraska on 4th Street, and features a 49 surface-acre lake which stores 310 acre feet of water on a tributary of Beaver Creek.

Constructed in 1990, for a five-year groundwater recharge study, the lake is now used primarily for recreation. A boat dock and ramp is accessible on the east side of the lake. Hunting is prohibited. However, an Archery Range used for target practice is located to the east of Road K.

Facilities at the site include picnic tables, cooking grills, fire rings, hiking trails and playground equipment. A picnic shelter is located near the north parking lot.



**LOCATION MAP**

**BRUCE L. ANDERSON RECREATION AREA / RECHARGE LAKE**