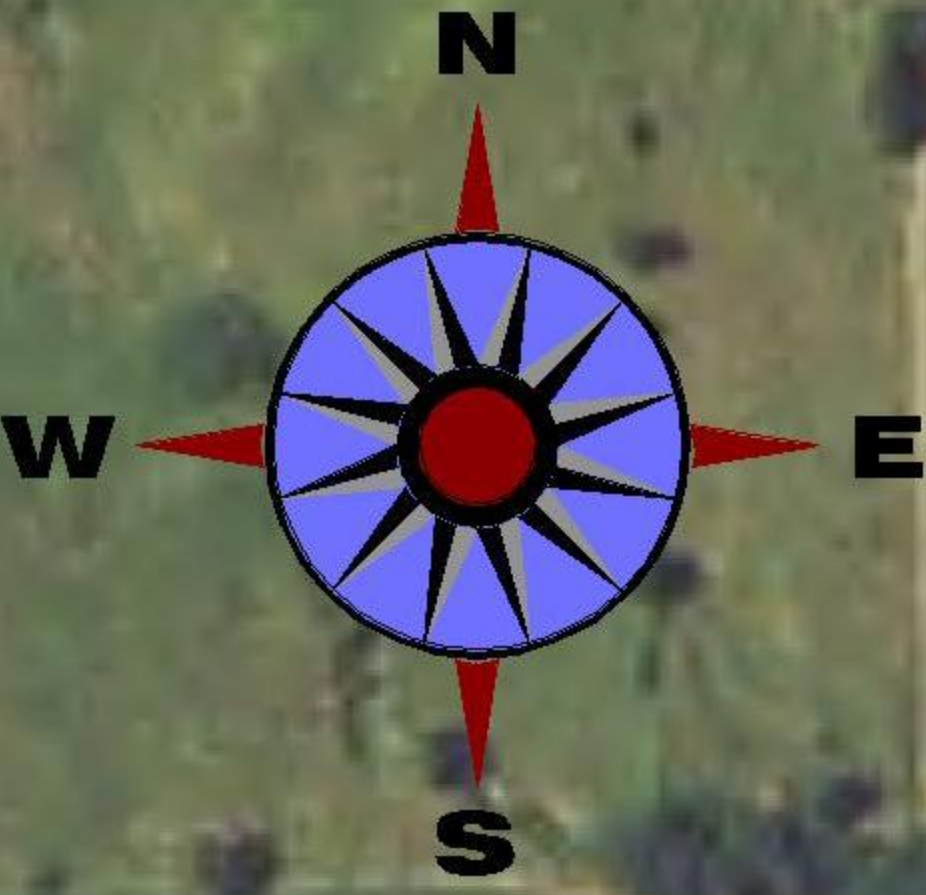


RECREATION AREA
BOUNDARY LINE



LEGEND

- Access Road
- Parking
- Rest Room
- Boat Ramp
- Hiking
- Fishing
- Tent Camping
- Picnic Shelter
- Playground
- Wildlife Viewing

Map Revised July 5, 2007

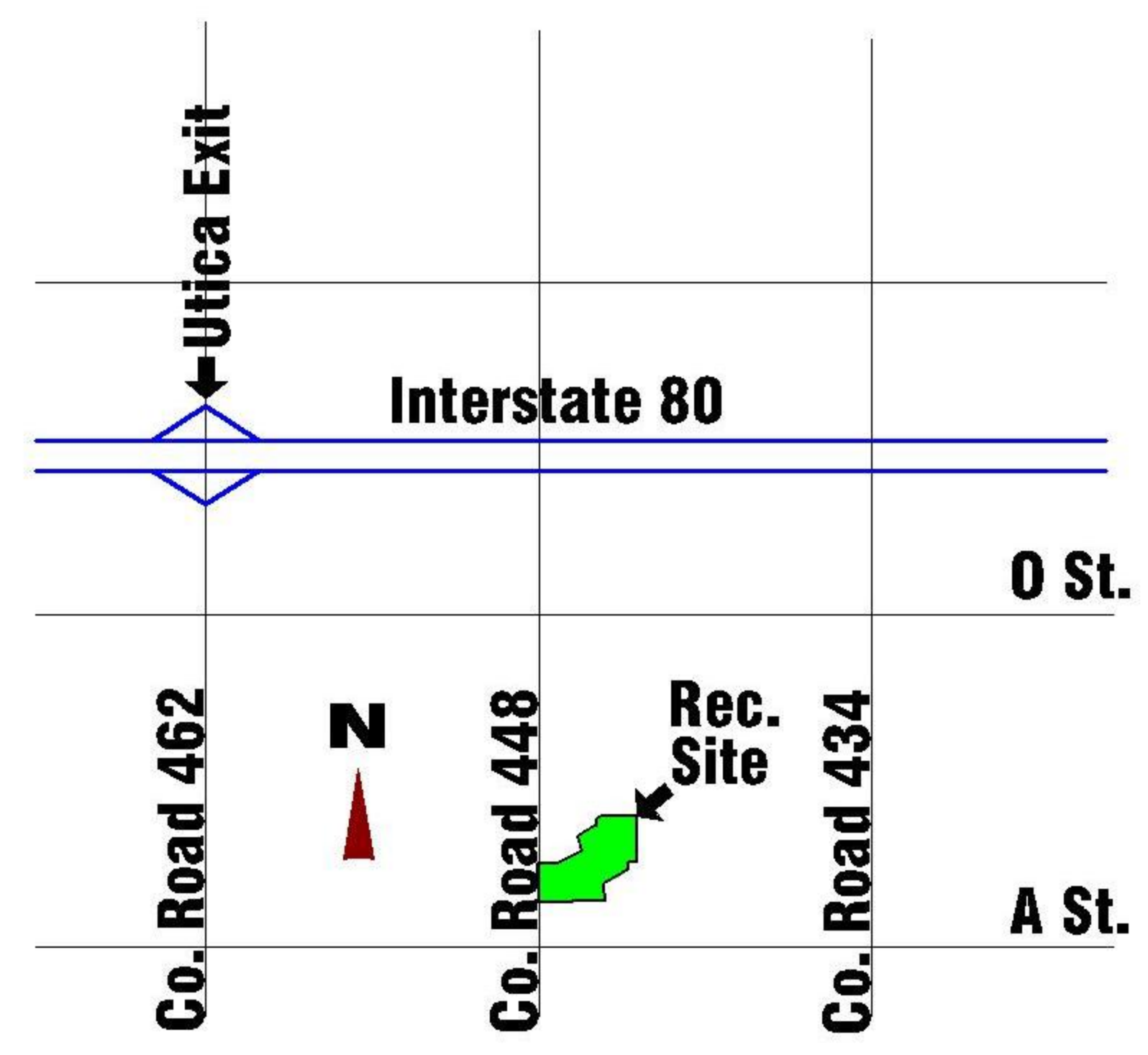
FAST FACTS

The Smith Creek Recreation Area, located 1.25 miles south and 1.0 mile east of the Utica, Nebraska interchange off Interstate 80, features a 21.9 surface-acre lake which stores 142 acre feet of water.

Constructed in 1983, the Smith Creek dam and reservoir was designed primarily to provide aquifer recharge and recreational opportunities.

Waterfowl hunting is permitted within the boundaries of the Smith Creek Recreation Area, but away from the parking and playground area.

Facilities at the site include a picnic shelter and tables, cooking grills and fire rings, as well as a hand pump and a wooden footbridge across the dam spillway on the West Side of the Lake.



LOCATION MAP

SMITH CREEK RECREATION AREA