

UPPER BIG BLUE NATURAL RESOURCES DISTRICT

REQUEST FOR PROPOSALS (RFP 2026-0002)

OXBOW TRAIL RECREATION AREA

ADA ACCESSIBLE FISHING DOCK

Contents

1. INTRODUCTION
2. EXAMINATION OF REQUEST FOR PROPOSAL DOCUMENTS AND EXPLANATION TO OFFEROR
3. LIST OF EXHIBITS INCLUDED IN RFP 2026-0002
4. AMENDMENTS TO REQUEST FOR PROPOSAL
5. PREPARATION COST
6. PRICING CONDITIONS
7. PAYMENT TERMS
8. RIGHT OF ACCEPTANCE
9. PROPOSAL EVALUTION CRITERIA
10. SUBMITTAL OF PROPOSAL
11. AWARD OF SUBCONTRACT
12. NOTICE OF SUCCESSFUL OFFEROR
13. NOTICE TO UNSUCCESSFUL OFFEROR



# Oxbow Trail Recreation Area

## ADA Accessible Fishing Dock

### 1. INTRODUCTION

This Request for Proposal (RFP) is issued by the Upper Big Blue Natural Resources District, CONTRACTOR; to solicit proposals for installing an EZ Dock floating modular ADA Accessible Fishing Dock off of the existing fishing jetty on the west side of the lake at Oxbow Trail Recreation Area located east of Ulysses in Butler County, Nebraska.

Oxbow Trail Recreation Area is located in the South Half of Section 23, Township 13 North, Range 2 East, just north of Road 23 approximately 1.5 miles east of Ulysses in Butler County, Nebraska. (address is 1122 23<sup>rd</sup> Road, Ulysses, Nebraska). (See Exhibits C-1, C-2, C-3, and C-4).

Oxbow Trail Dam was constructed in 1998 and features a 39-surface acre lake that can store 274-acre feet of water. The lake's water source is supplied by rainfall from a 2,523 acre drainage area and from flow from underground springs.

The dam has a principal spillway with a crest elevation of 1546.0 feet and a 30 inch diameter precast concrete cylinder pipe outlet. The dam also has a 225 foot wide emergency spillway on the east end of the dam that has a crest elevation of 1549.2 feet.

Existing facilities at Oxbow Trail Recreation Area include a boat ramp, boat dock, fishing jetty, picnic shelter, vault restroom, and hiking trail.

### 2. EXAMINATION OF REQUEST FOR PROPOSAL DOCUMENTS AND EXPLANATION TO OFFEROR

Should the OFFEROR find discrepancies in, or omissions from the RFP, or should the intent or meaning appear unclear or ambiguous, or should any other questions arise relative to the RFP, the OFFEROR shall notify CONTRACTOR by September 25, 2025, via e-mail to [jwergin@upperbigblue.org](mailto:jwergin@upperbigblue.org). The OFFEROR making such a request solely will be responsible for its timely receipt by the CONTRACTOR. Replies to such notices will be addressed within 2 working days of receipt by the CONTRACTOR. If the request(s) require changes to the original RFP, then an amendment to the RFP will be issued to all prospective OFFERORS and shared via <https://www.upperbigblue.org/about/bid-proposals>. As reviewed by the CONTRACTOR, if a request(s) is deemed significant, the CONTRACTOR at their discretion may extend the closing date of the RFP.

### 3. EXHIBITS INCLUDED IN RFP 2026-0002

Exhibit A – Schedule of Events

Exhibit B – Project Background, Scope of Work

Exhibit C – Oxbow Trail Recreation Area – Location Maps



- C-1 Butler County
- C-2 Butler County
- C-3 Oxbow Trail Recreation Area
- C-4 Oxbow Trail – ADA Accessible Dock Location

Exhibit D – Oxbow Trail – ADA Accessible Dock – Design Drawings

- D-1 Dock Sketch

Exhibit E – Oxbow Trail ADA Accessible Dock - Contractor's Quote - Schedule of Values

**4. AMENDMENTS TO REQUEST FOR PROPOSAL**

If this RFP is amended, all terms and conditions that are not modified remain unchanged. The term "RFP" includes all exhibits and amendments provided by the OFFEROR as part of this RFP.

**5. PREPARATION COST**

The preparation of the proposal shall be by, and at the expense of, the OFFEROR.

**6. PRICE CONDITIONS**

The quoted price must include all costs to the CONTRACTOR for all supervision, labor, tools, supplies, materials, equipment, transportation, testing, and any other miscellaneous for full and complete performance of the work as set forth herein.

Pricing will be guaranteed for 90 days from submission of proposal. All pricing information requested in this RFP must be provided. Costing/Pricing by details must be broken down by labor, materials, etc. CONTRACTOR reserves the right to require the OFFEROR to furnish an accounting breakdown of all contract prices.

**7. PAYMENT TERMS**

CONTRACTOR payment terms are net 30 days upon receipt of invoice, subject to approval by the Upper Big Blue Natural Resources District Board of Directors.

**8. RIGHT OF ACCEPTANCE**

CONTRACTOR reserves the right to:

- Accept or reject any proposal in whole or in part.
- Reject all proposals, with or without, notice or reason.
- Enter into discussions or negotiations with OFFEROR prior to award. Negotiations do not constitute an acceptance of the proposal, nor rejection of the proposal, nor a counteroffer by the CONTRACTOR.
- Abandon the work or have the work performed in such a manner as CONTRACTOR may elect, if no proposal is accepted.

**9. PROPOSAL EVALUATION CRITERIA**

While the CONTRACTOR intends to engage in the purchase of services, this event shall not guarantee that the participating OFFEROR will be awarded a Subcontract.





Any award resulting from this request will be made to the OFFEROR whose proposal provides the best value to CONTRACTOR. The best value determination will be at the sole discretion of CONTRACTOR and could result in an award to someone other than the lowest price proposal. Any resulting purchase award will be set forth in writing between the CONTRACTOR and the successful OFFEROR at some date after the close of the request. CONTRACTOR reserves the option to cancel this RFP process at a time and/or to elect not to engage in a Subcontract.

The OFFEROR must provide all data required in order to be considered an acceptable OFFEROR. All data must be executed completely, correctly, and accurately by the OFFEROR. Should the OFFEROR not complete all forms and documents, the OFFEROR will be deemed non-responsive.

This RFP will be evaluated based on the following criteria. OFFERORs are reminded the Subcontract will be awarded for best value with technical ability having the highest weighted percentage.

Criteria	Weighted Percentage (%)
Technical Ability (Experience, Project Plan, Schedule)	50%
Cost	50%
<b>Total</b>	<b>100%</b>

#### 10. SUBMITTAL OF PROPOSAL

OFFEROR's proposal must be submitted with

- Past similar project experience,
- Project Lead
- Estimated project schedule (Project completion by December 19, 2025).  
(See Exhibit A – Schedule of Events)
- Detailed cost estimate: Please utilize the attached Schedule of Values.  
(see Exhibit E – Oxbow Trail ADA Accessible Fishing Dock – Contractor's Quote – Schedule of Values)
- Listing of Subcontractors if applicable.
- **Proposals must be received by the CONTRACTOR by 3:00 p.m. CST. on Tuesday, October 7, 2025.**
- Proposals should be submitted via hand delivery, USPS, or E-mail to:

Upper Big Blue Natural Resources District  
Attn: Jack Wergin  
319 East 25<sup>th</sup> Street  
York, NE 68467

Or emailed to:

[jwergin@upperbigblue.org](mailto:jwergin@upperbigblue.org)



**11. AWARD OF SUBCONTRACT**

CONTRACTOR contemplates award of a Subcontract in accordance with the requirements and conditions set forth or incorporated by reference in this RFP.

Proposals for other than the total work defined may be rejected. The Award may not be made to any OFFEROR who has not responded to all instructions and representations indicated in the RFP.

CONTRACTOR may reject any or all proposals if such action is in the best interest of CONTRACTOR and their PARTNERS and/or waive informalities and minor irregularities in offers received.

CONTRACTOR and their PARTNERS may evaluate proposals and the CONTRACTOR award a Subcontract without discussions with OFFEROR. Therefore, each initial proposal should contain the OFFEROR's best terms.

CONTRACTOR reserves the right to conduct discussions, if later determined to be necessary by CONTRACTOR's Subcontract Administrator and Project Lead.

The OFFEROR agrees, if the proposal is accepted within the number of days allowed, to furnish all items upon which prices are offered, at the set price opposite each item, at the designated point(s) within the time specified in the schedule.

**12. NOTICE TO SUCCESSFUL OFFEROR – W-9 Verification, Certificate of Liability Insurance**

CONTRACTOR will require any successful OFFEROR to supply a W-9 form (Request for Taxpayer Identification Number and Certification) and a Certificate of Liability Insurance.

**13. NOTICE OF UNSUCCESSFUL OFFEROR**

The OFFEROR will be informed whether the proposal was successful using a method deemed adequate by the CONTRACTOR.



## Exhibit A

### SCHEDULE OF EVENTS

Event	Date
Opening Date	September 5, 2025
Omissions and/or Questions	September 19, 2025
Closing Date	October 7, 2025
Evaluation Period	October 7 – 9, 2025
Anticipated Subcontract Award	October 17, 2025
Notice to Proceed	October 20, 2025
Project Completion, Final Report	December 19, 2025





## Exhibit B

# BACKGROUND & SCOPE OF WORK

### Project Background

Oxbow Trail Recreation Area is located at 1122 Road 23, in the South Half of Section 23, Township 13 North, Range 2 East, approximately 1.5 miles east of Ulysses in Butler County, Nebraska. (See Exhibits C-1, C-2, C-3).

Oxbow Trail Recreation Area is owned, operated, and maintained by the UBBNRD.

Oxbow Trail Dam was constructed in 1998 and features a 39-surface acre lake that can store 274-acre feet of water. The lake's water source is supplied by rainfall from a 2,523 acre drainage area and from flow from underground springs. The dam has a principal spillway with a crest elevation of 1546.0 feet and a 30 inch diameter precast concrete cylinder pipe outlet. The dam also has a 225 foot wide emergency spillway on the east end of the dam that has a crest elevation of 1549.2 feet. The drainage area Existing facilities at Oxbow Trail Recreation Area include a boat ramp, boat dock, fishing jetty, picnic shelter, vault restroom, and hiking trail.

### Scope of Work

The suggested scope of work is below, and prospective consultants should suggest any proposed alterations to this scope of work.

The tasks and specific steps for this study include the following:

1. Furnish and install a floating modular ADA Accessible Fishing Dock off the existing jetty on the west side of Oxbow Trail Lake;
  - a. 4 ft deep x 10 ft wide by 12" thick concrete headwall to be installed by others
  - b. 24 foot long by 5 foot wide ADA aluminum gangway attached to headwall
  - c. Abutment Kit – to anchor gangway to headwall
  - d. 5 foot aluminum transition plate
  - e. Roller kit with PVC roller
  - f. Three (3) – EZ Dock - 80" W X 10' L X 15" H polyethylene dock sections (see Exhibit D-1)
  - g. Ten (10) EZ Dock Coupler Sets (see Exhibit D-1)
  - h. Four (4) EZ Dock Heavy duty polyethylene pipe brackets (see Exhibit D-1)
  - i. Four (4) 2-1/2" OD by 25 foot long pipes - (see Exhibit D-1)
  - j. Four (4) 2-1/2" OD nut-and-bolt augers (see Exhibit D-1)
  - k. Four (4) 2-1/2" OD pipe caps on anchor pipes
  - l. Aluminum Railings
    - i. Four (4) Style 912 Aluminum Railings (10' X 3'-6")

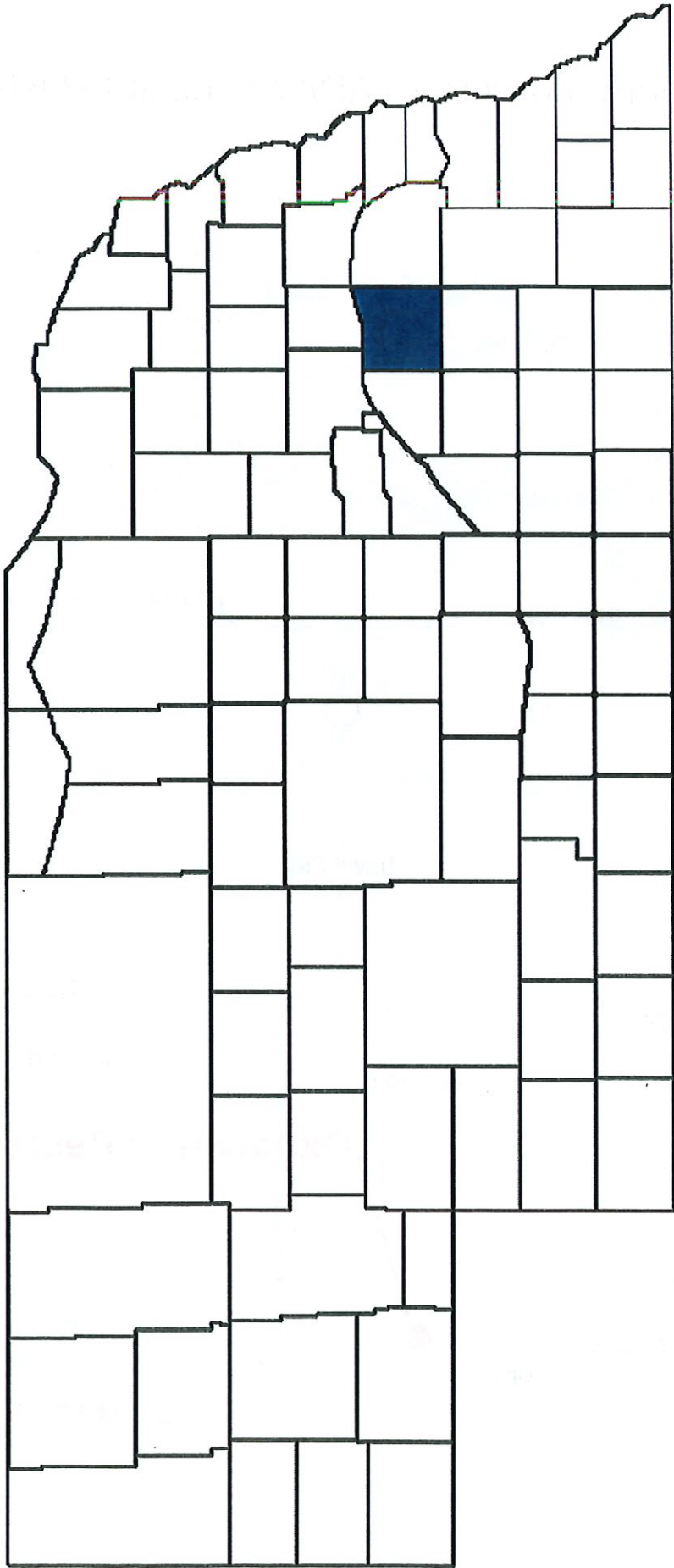


1. 2 – dock section off of gangway (see Exhibit D-1)
    2. 2 – dock sections of fishing area (see Exhibit D-1)
  - ii. Two (2) Style 912 Aluminum Railings (80" x 3'-6")
    1. 2 – off lake side of fishing area (see Exhibit D-1)
  - iii. Two (2) Style 919 Aluminum Railings (40" x 3'-6")
    1. 2 – off bank side of fishing area (see Exhibit D-1)
2. During construction, appropriate access and warning signs will need to be posted at the parking lot and/or at the end of the existing jetty.
3. The Contractor will provide a weekly update on the project progress to the UBBNRD.





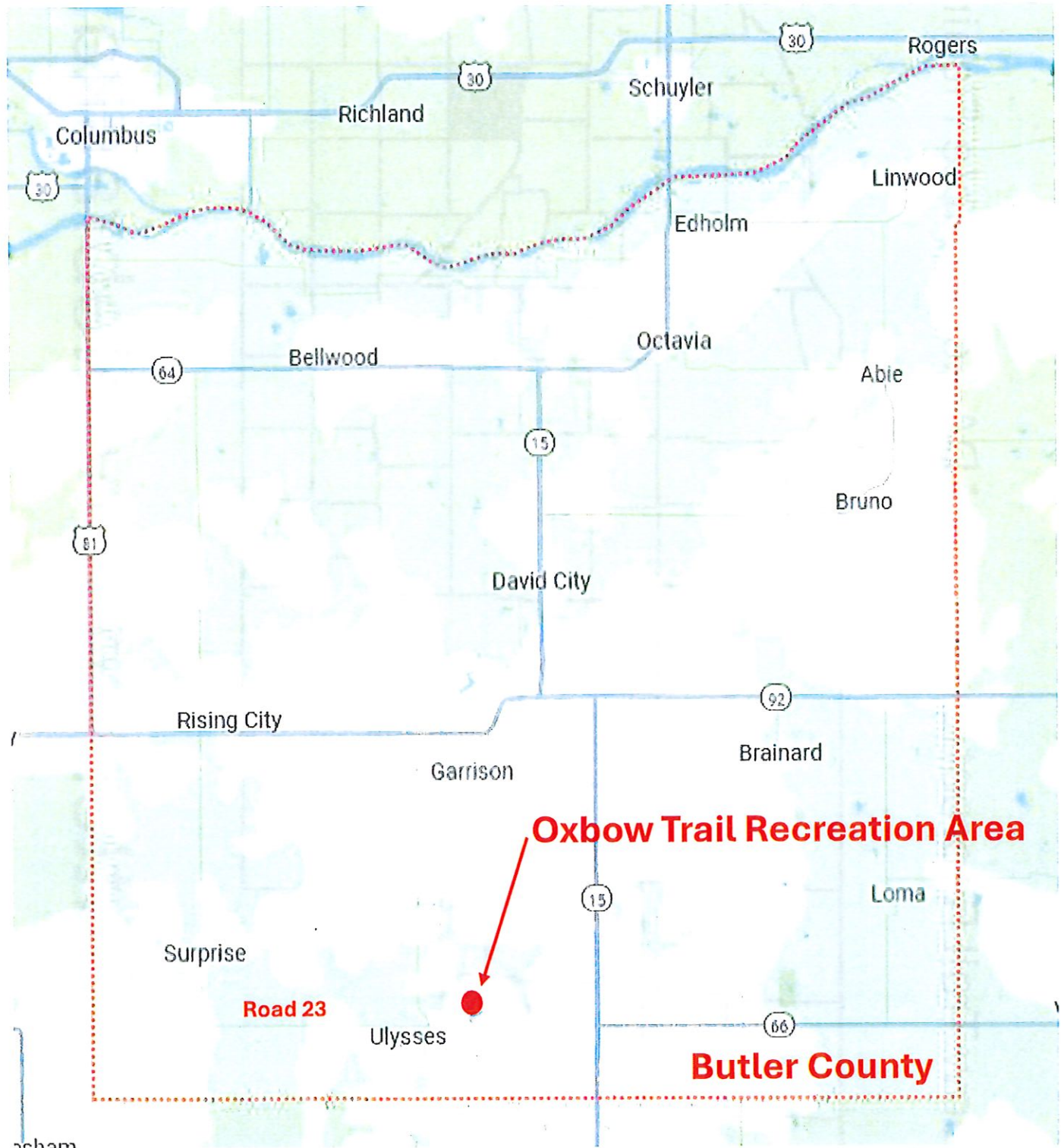
Oxbow Trail Recreation Area – ADA Accessible Fishing Dock



Butler County, Nebraska

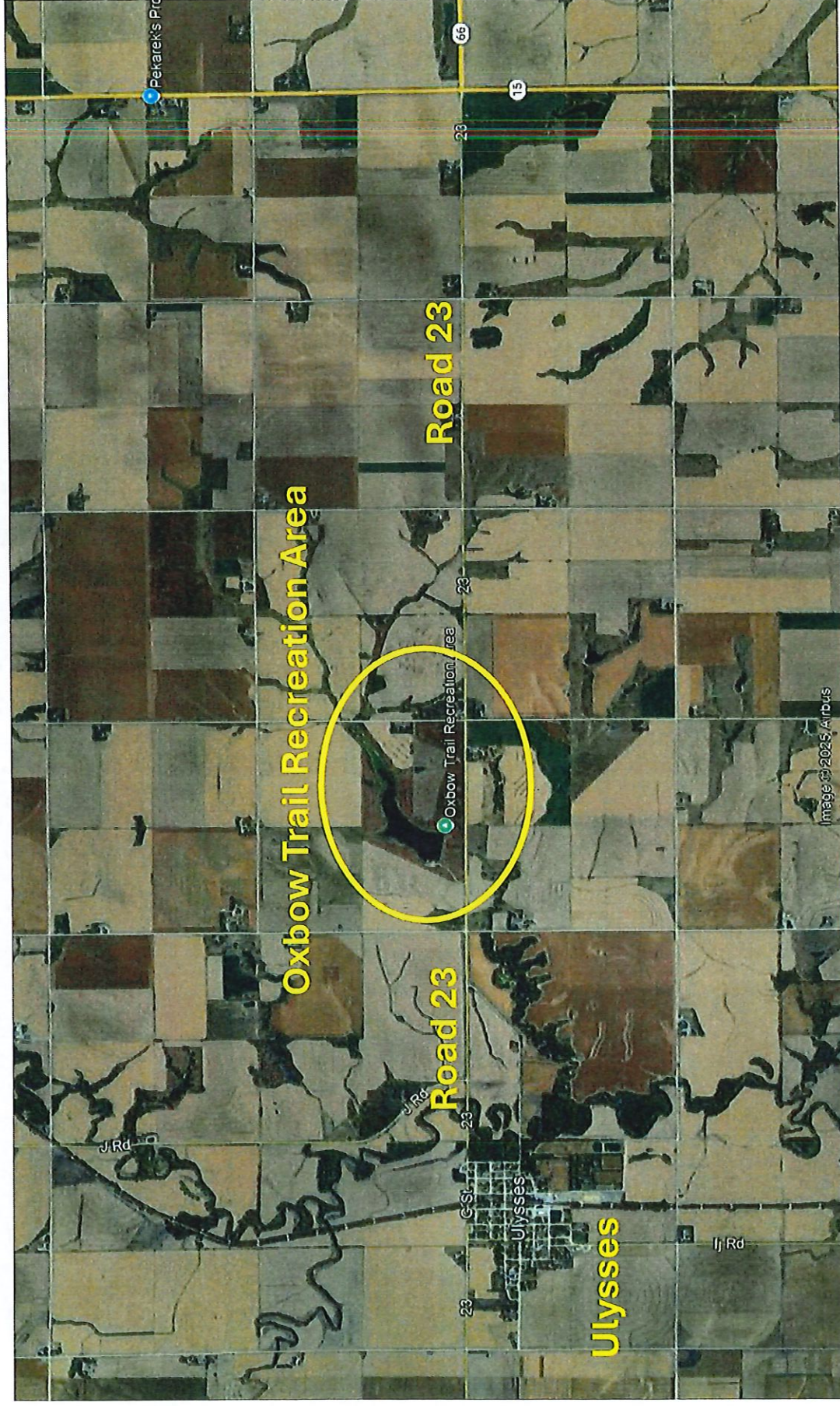
# Oxbow Trail Recreation Area – ADA Accessible Fishing Dock

## Location Map



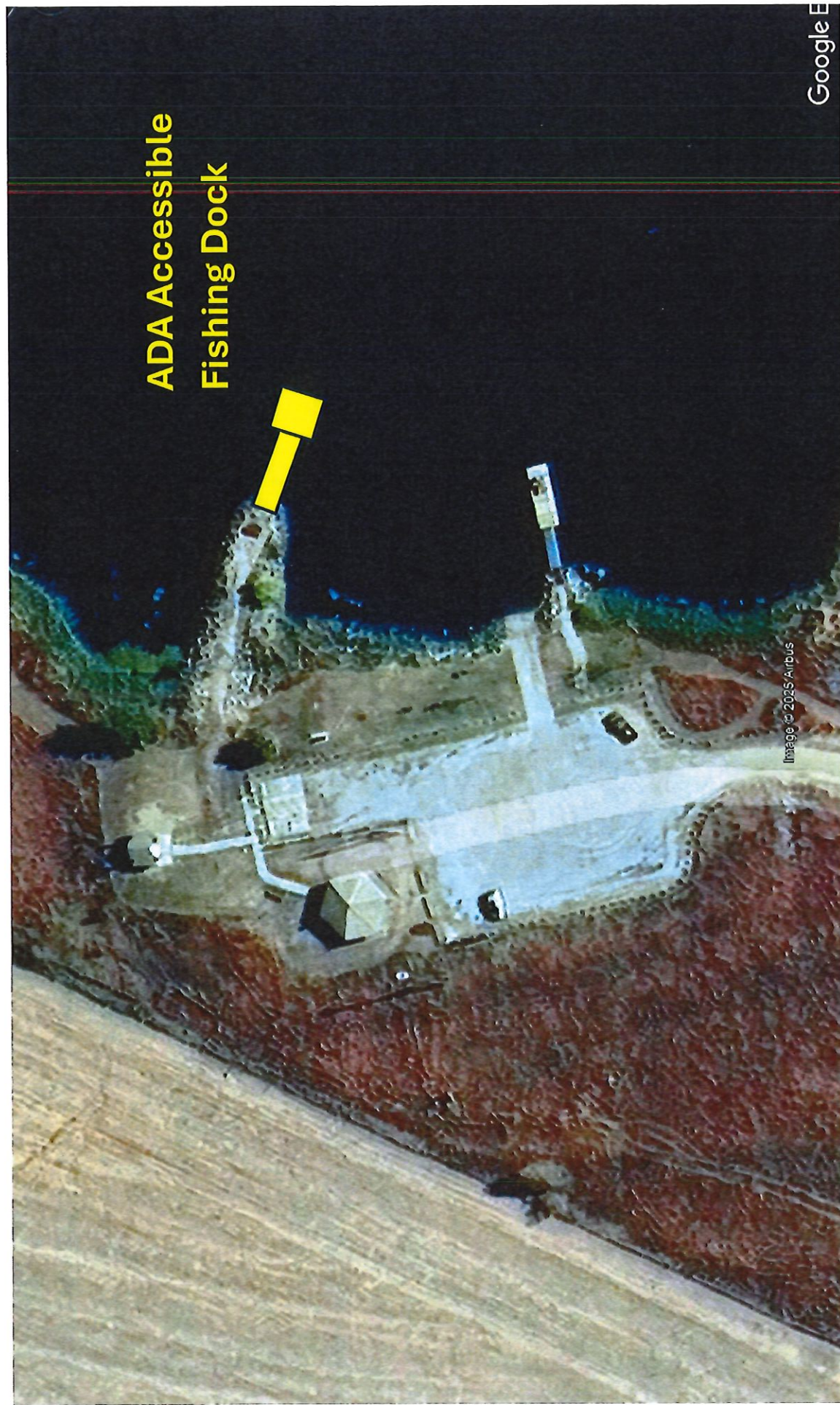


Oxbow Trail Recreation Area – ADA Fishing Dock



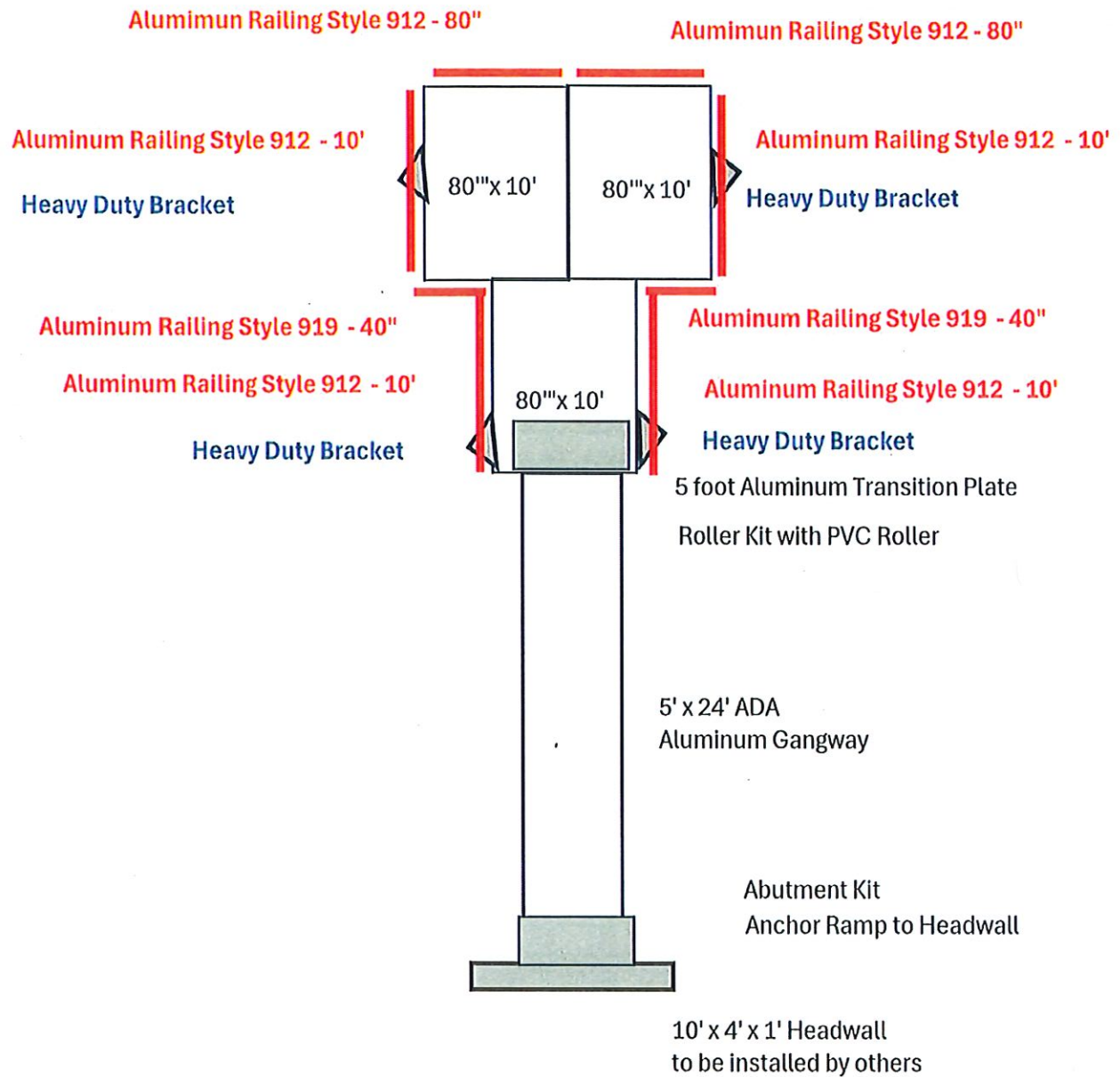


# Oxbow Trail Recreation Area – ADA Fishing Dock





# Oxbow Trail - ADA Fishing Dock





**EXHIBIT E****CONTRACTOR'S QUOTE**

CONTRACTOR'S SCHEDULE OF VALUES FOR THE OXBOW TRAILS ADA ACCESSIBLE FISHING DOCK					
Item #	Description	Quantity	Unit	Unit Price (\$)	Amount (\$)
1	Mobilization	1	LS		
2	Construction Access Signage - in Parking Lot and/or on Existing Jetty	1	LS		
3	24 foot long X 5 foot wide ADA Aluminum Gangway	1	LS		
4	Gangway Accessories, including a. Abutment Kit b. 5 foot aluminum transition plate c. roller kit with PVC roller	1	LS		
5	80" Wide X 10' Long X 1.5" High polyethylene EZ Dock dock sections	3	ea		
6	EZ Dock Coupler Sets	10	ea		
7	Set of anchors, including a. EZ Dock heavy duty polyethylene pipe brackets b. 2-1/2 OD 25 foot long pipe sections c. 2-1/2" OD nut-and-bolt augers d. 2-1/2" OD pipe caps	4	set		
8	Style 912 Aluminum Railings – 10 feet	4	ea		
9	Style 912 Aluminum Railings – 80 inches	2	ea		
10	Style 919 Aluminum Railings – 40 inches	2	ea		
<b>TOTAL =</b>					

Contractor will complete Work for the Unit Prices listed above in accordance with Design Drawings.

Contractor acknowledges that quantities are estimates and that final payment for all unit priced items will be based on actual quantities including any Change Orders.

Contractor agrees that the Work will be completed prior to December 19, 2025.

AS SUBMITTED BY:

Business Name (typed or printed): \_\_\_\_\_

By: (typed or printed Signature Name) \_\_\_\_\_

By: \_\_\_\_\_  
(Signature)

\_\_\_\_\_  
(Date)

