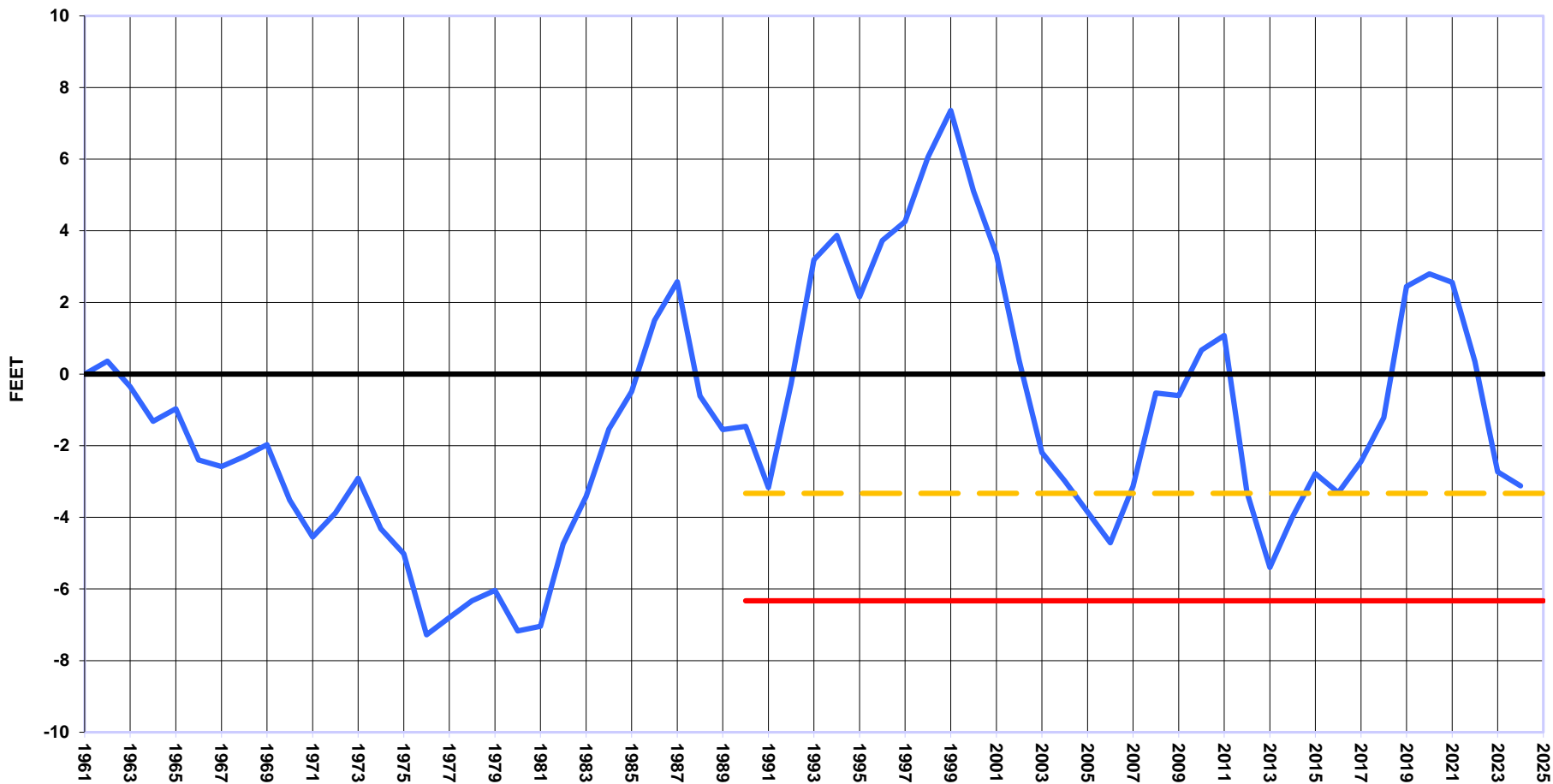


**UPPER BIG BLUE NRD - AVERAGE GROUNDWATER LEVELS
TRIGGERS COMPARED TO HISTORIC LEVELS
SPRING 2025**



- Cumulative Groundwater Level Change
- Allocation Trigger
- - - Reporting Trigger

The Spring 2025 ground water level change was a decline of 0.39 feet.
The average level is 3.21 feet above the "Allocation Trigger".