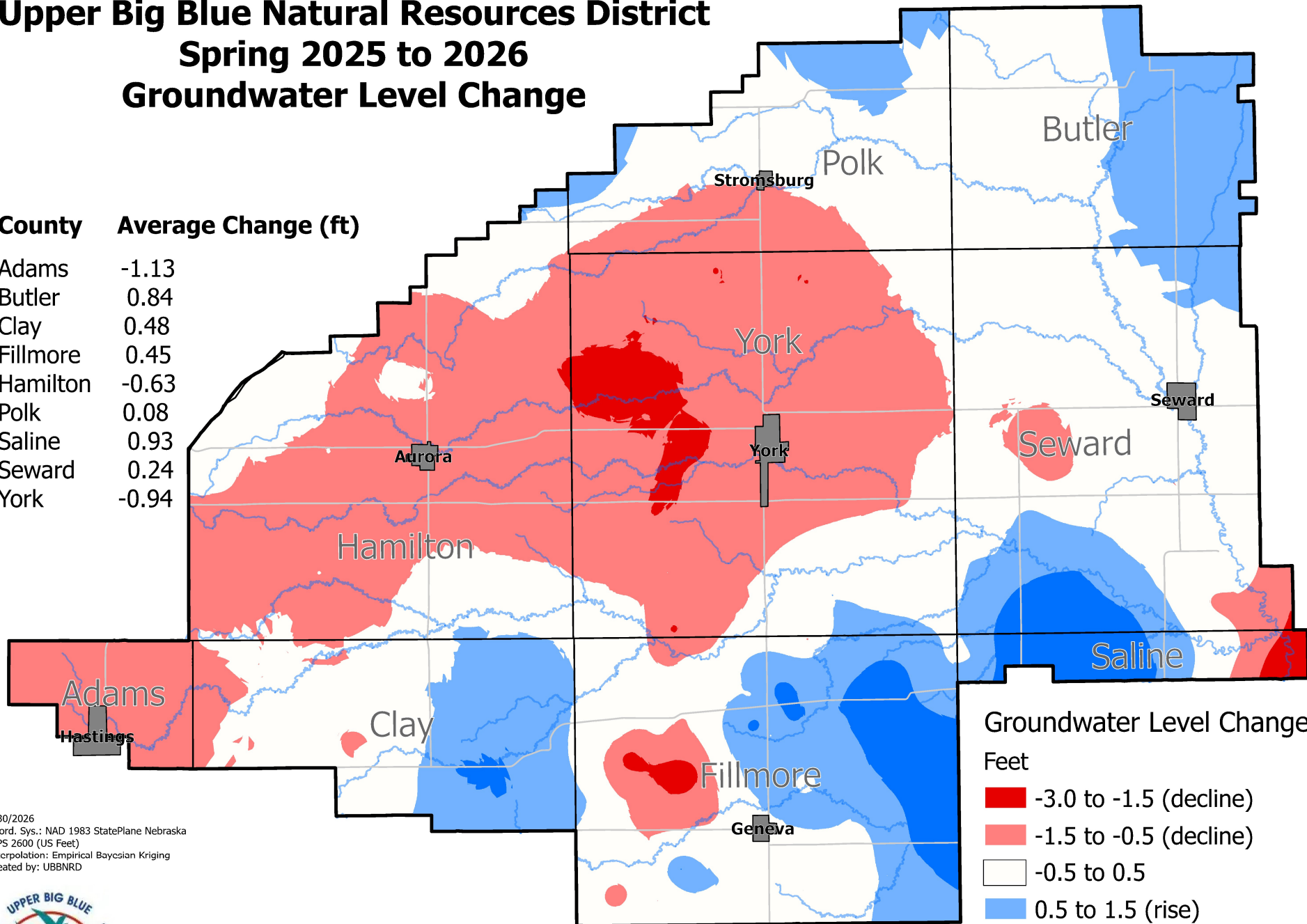


Upper Big Blue Natural Resources District Spring 2025 to 2026 Groundwater Level Change

County Average Change (ft)

Adams	-1.13
Butler	0.84
Clay	0.48
Fillmore	0.45
Hamilton	-0.63
Polk	0.08
Saline	0.93
Seward	0.24
York	-0.94



Groundwater Level Change

Feet

- -3.0 to -1.5 (decline)
- -1.5 to -0.5 (decline)
- -0.5 to 0.5
- 0.5 to 1.5 (rise)
- 1.5 to 3.0 (rise)

4/30/2026
Coord. Sys.: NAD 1983 StatePlane Nebraska
FIPS 2600 (US Feet)
Interpolation: Empirical Bayesian Kriging
Created by: UBBNRD



The average groundwater level change was -0.10 feet (decline)

0 5 10 Miles

