



United States Department of Agriculture



# Natural Resources Conservation Service

**Brach Johnson**

Urban Conservationist – Nebraska

Urban Ag 2024



Natural  
Resources  
Conservation  
Service

[nrcs.usda.gov/](https://nrcs.usda.gov/)





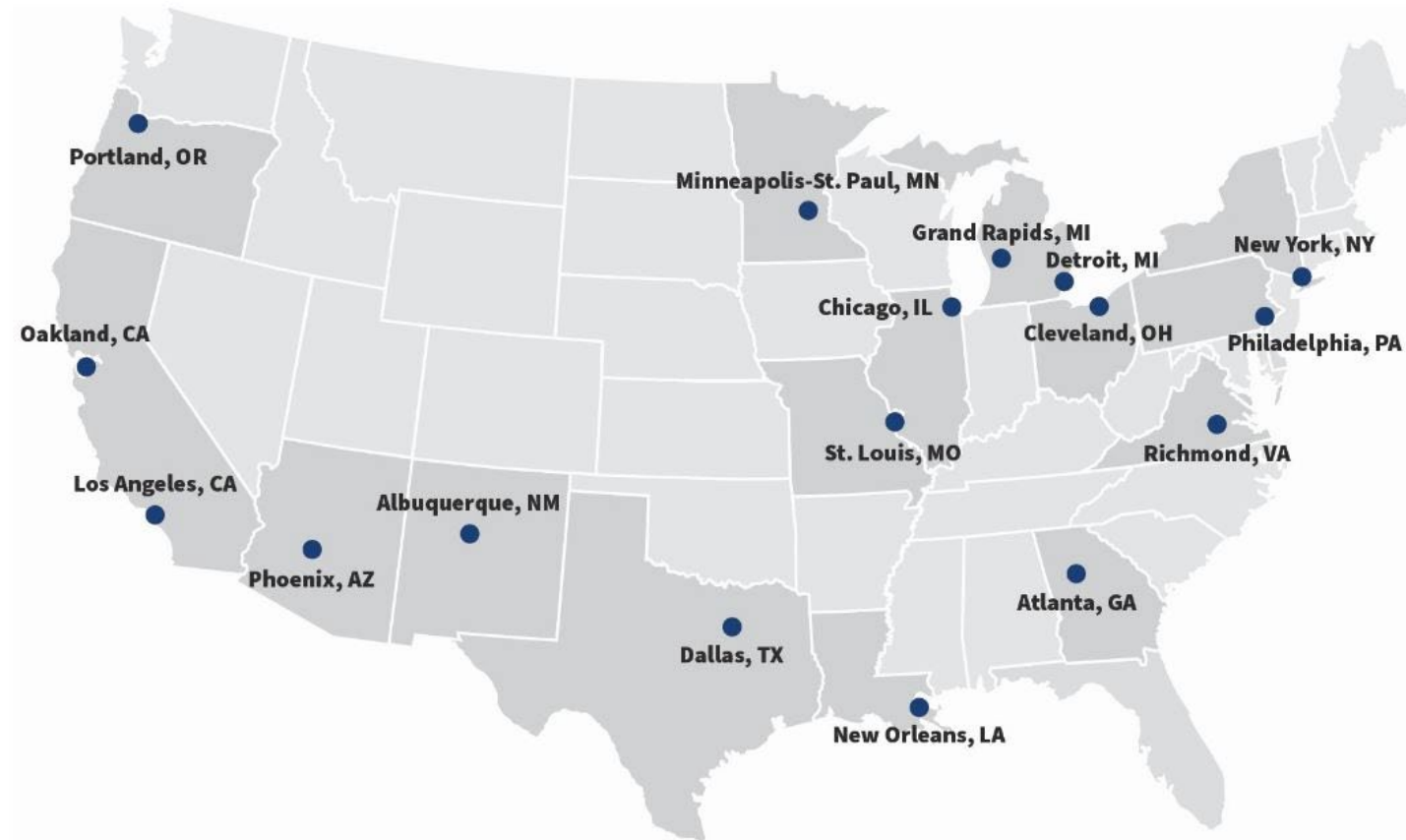
- **Urban Agriculture is one of NRCS's top five priorities**
- **"Micro Practices" have been established for Urban Ag**
- **New Office of Urban Ag and Innovative Production has been created**
- **NRCS ramping up training for the public and employees**
- **Innovative Production fully supported**



# Established 17 urban ag service centers with county committees



Map of USDA Urban Service Center Locations







## **Multiple ways to participate with NRCS:**



- Direct technical and financial assistance with individuals and entities
- Grants and Agreement

Cory Schmidt  
High tunnel  
2013



Natural  
Resources  
Conservation  
Service

[nrcs.usda.gov/](http://nrcs.usda.gov/)







## Direct Participation programs:

- Environmental Quality Incentives Program (EQIP)
- Conservation Stewardship Program (CSP)





# Who are our customers? Beavers Produce Rogers, NE



Natural  
Resources  
Conservation  
Service

[nrcs.usda.gov/](https://nrcs.usda.gov/)





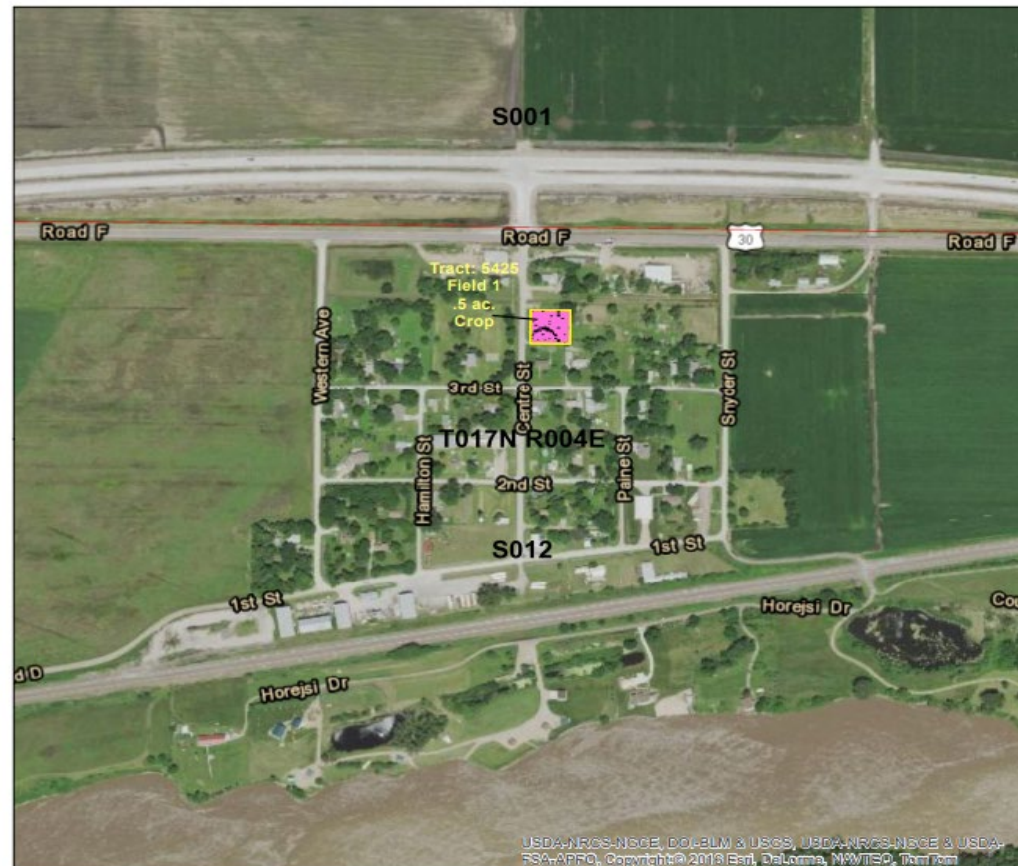


# EQIP 210UP Plan Map

Date: 4/2/2021

Location: 12-17-4E  
Colfax County, Nebraska  
Approximate Acres: 0.50

USDA-NRCS  
SCHUYLER SERVICE CENTER  
LOWER PLATTE NORTH NATURAL  
RESOURCES DISTRICT



USDA-NRCS-NGCE, DOLEBIL & USGS, USDA-NRCS-NGCE & USDA-  
FSA-APFO. Copyright © 2018 Esri, DeLorme, NAVTEQ, Garmin

Prepared with assistance from USDA-Natural Resources Conservation Service

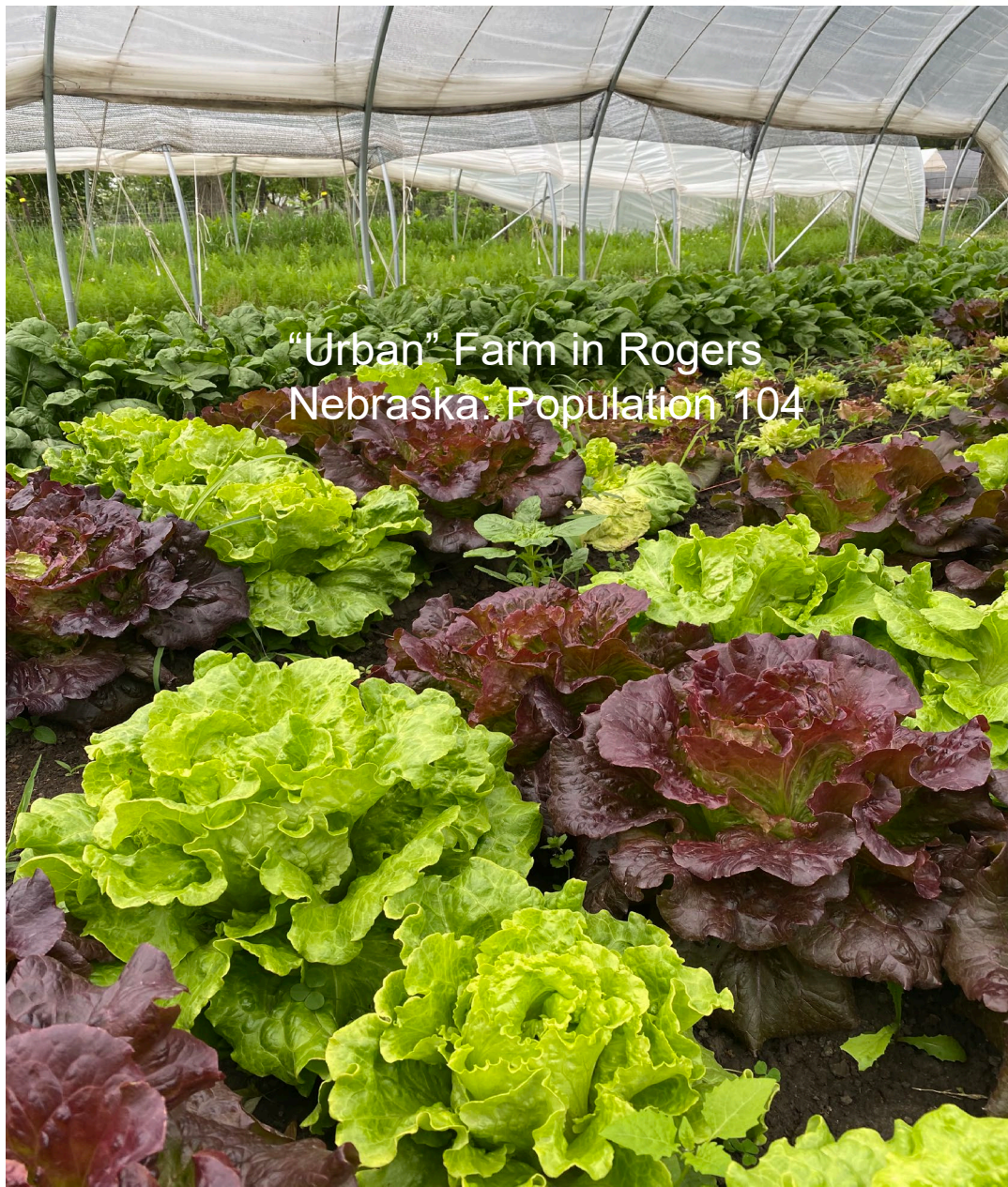
0 500  
Feet

Practice Schedule  
PLUS

Conservation Practice  
Polygons

High Tunnel System  
(325) 2022





"Urban" Farm in Rogers  
Nebraska Population 104







Emanuel from Benghazi, Africa  
picking out beans – Omaha  
Permaculture







## Omaha Permaculture





## Tribal projects and in Kearney, Nebraska!



Natural  
Resources  
Conservation  
Service

[nrcs.usda.gov/](https://nrcs.usda.gov/)







## Latino Center of the Midlands

### Chayote - squash





# Voices for Food – South Sioux City

Over 10,000 pounds of food distributed through this \$50 cooler in 2022.





## Community Garden: Hawley Hamlet - Lincoln







Cut flower farm and tree nursery.



Natural  
Resources  
Conservation  
Service

[nrcs.usda.gov/](https://nrcs.usda.gov/)



Established an Urban and small-scale ag sub committee  
Approved a “micro practice” list for programs

## Raised Beds and Compost Facility





## High Tunnel and Micro irrigation



Natural  
Resources  
Conservation  
Service

[nrcs.usda.gov/](https://nrcs.usda.gov/)







# Advance Payments

Are you eligible?



## What is an advance payment?

If you are a contract holder with the Natural Resources Conservation Service (NRCS) and meet the criteria as a limited resource farmer or rancher, beginning farmer or rancher, socially disadvantaged farmer or rancher, or veteran farmer or rancher, you may be eligible for an advance payment.

An advance payment provides you the opportunity to receive up to 50% of your payment up front to purchase immediately-needed materials and services. However, there are some requirements you should be aware of before making the request:

- A completed, approved design with exact quantifiable units that will be installed (feet, type, and diameter of pipe, square feet of high tunnel, etc.) must already be signed both by you and by an NRCS employee.
- Your contract may need to be modified to reflect the appropriate practice component and quantities to exactly match your completed, approved design.
- Advance payment funds must be used to purchase materials and services needed to implement a practice.



## Still ready to proceed?

Here are a few other items you need to know:

- You will need to provide documentation showing any advance payment funds you receive have been expended within 90 days of when you received the funds.
- If you do not provide documentation showing the funds have been expended as outlined above, you will be required to pay the money back.
- If you do not pay the money back as required above, your contract may be terminated with financial penalties.
- If the practice you install does not exactly match the quantities documented in the advance payment, additional penalties may be leveled and delays in future payments or activities in your contract could result.

## Confident you're ready for an advance payment?

Here are the next steps:

- Submit a request for an advance payment to your NRCS field office. Be sure to tell NRCS what item you'd like an advance payment on.
- Verify that the NRCS field office has your most up-to-date bank account information.
- The NRCS field office will work with you to ensure the bulleted items above are completed.







## Established the Nebraska Urban Ag Conservation Council



Natural  
Resources  
Conservation  
Service

[nrcs.usda.gov/](https://nrcs.usda.gov/)





## Created urban and small-scale ag training program for employees and partners



Natural  
Resources  
Conservation  
Service

[nrcs.usda.gov/](https://nrcs.usda.gov/)





# Conservation Collaborative Agreement with UNL –Urban Soil Health

## Nebraska Urban Soil Health Initiative

A partnership between the University of Nebraska–Lincoln, USDA Natural Resources Conservation Service, and gardeners throughout Nebraska.

The Nebraska Urban Soil Health Initiative is a citizen science project for urban farmers and gardeners throughout the state. The soil health and regenerative agriculture movement is gaining momentum on corn, soybean, and wheat acres across the state, but soil health management practices like cover crops and no-till are less common in urban gardens.

There are more than 30 million households in the U.S. engaged in vegetable production, and our goal is to increase awareness among these backyard farmers about soil health and the related resources and programs available through the USDA Natural Resources Conservation Service (NRCS). To achieve this goal, **we are recruiting at least 200 urban farmers and gardeners in Nebraska to implement new soil health management practices including cover crops, no-till, and soil amendment with compost and biochar.**

Participating citizen-scientist gardeners will collect plant and soil data to learn about the benefits of soil health management practices firsthand and provide UNL with data to evaluate changes in urban soil health over time. **Participants will receive a free annual soil health test and supplies to implement a new soil health management**

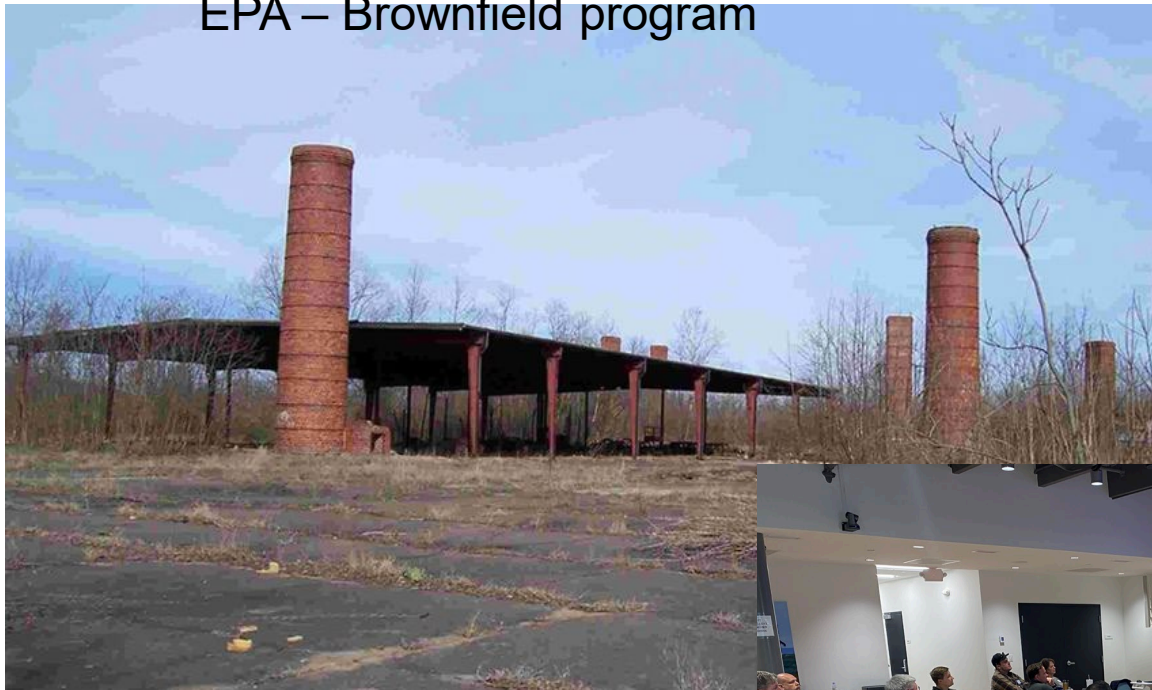


Natural  
Resources  
Conservation  
Service

[nrcs.usda.gov/](https://nrcs.usda.gov/)



## Partnering with Nebraska Department of Environment and Energy and the Environmental Protection Agency to share information about urban ag. EPA – Brownfield program





# What new practices do people want?

## Freight farm vertical farming





## Chicken tractors and Johnson-Su bioreactor



Natural  
Resources  
Conservation  
Service

[nrcs.usda.gov/](https://nrcs.usda.gov/)



# Geothermal greenhouse and hydroponics



Natural  
Resources  
Conservation  
Service

[nrcs.usda.gov/](https://nrcs.usda.gov/)







## Nebraska Agriculture:

Corn = # 3

Soybean = # 4

Cattle = # 2

Beef processing = # 1

Meat sales = # 3

## Vegetable production:

California = 71% of US total  
production





In the United States:  
⇒ 3 day supply of groceries in stores  
⇒ Personal food on hand, 8 days supply







BY AUTUMN SWIERS / JULY 16, 2023 2:11 PM EST

Inflation-weary consumers are cutting back on their grocery purchases. Shoppers have been employing an arsenal of money-saving tactics like **switching to generic brands** or shopping at discount stores. But, **as inflation drags on**, some items are getting 86'ed from grocery lists altogether. Data research platform NielsenIQ found that the top three foods Americans can't justify shelling out for anymore are frozen meals, fruit juice, and soup, reports **Bloomberg**. Folks have been scrimping on these categories since at least April.







## ***Food Security – 1996 World Food Summit***

All people, at all times, have physical and economic access to sufficient safe and nutritious food that meets their dietary needs and food preferences for an active and healthy life.

The four main dimensions of food security:

- Physical *availability* of food
- Economic and physical *access* to food
- Food *utilization, perceived nutrient value of food for example*
- *Stability* of the other three dimensions over time





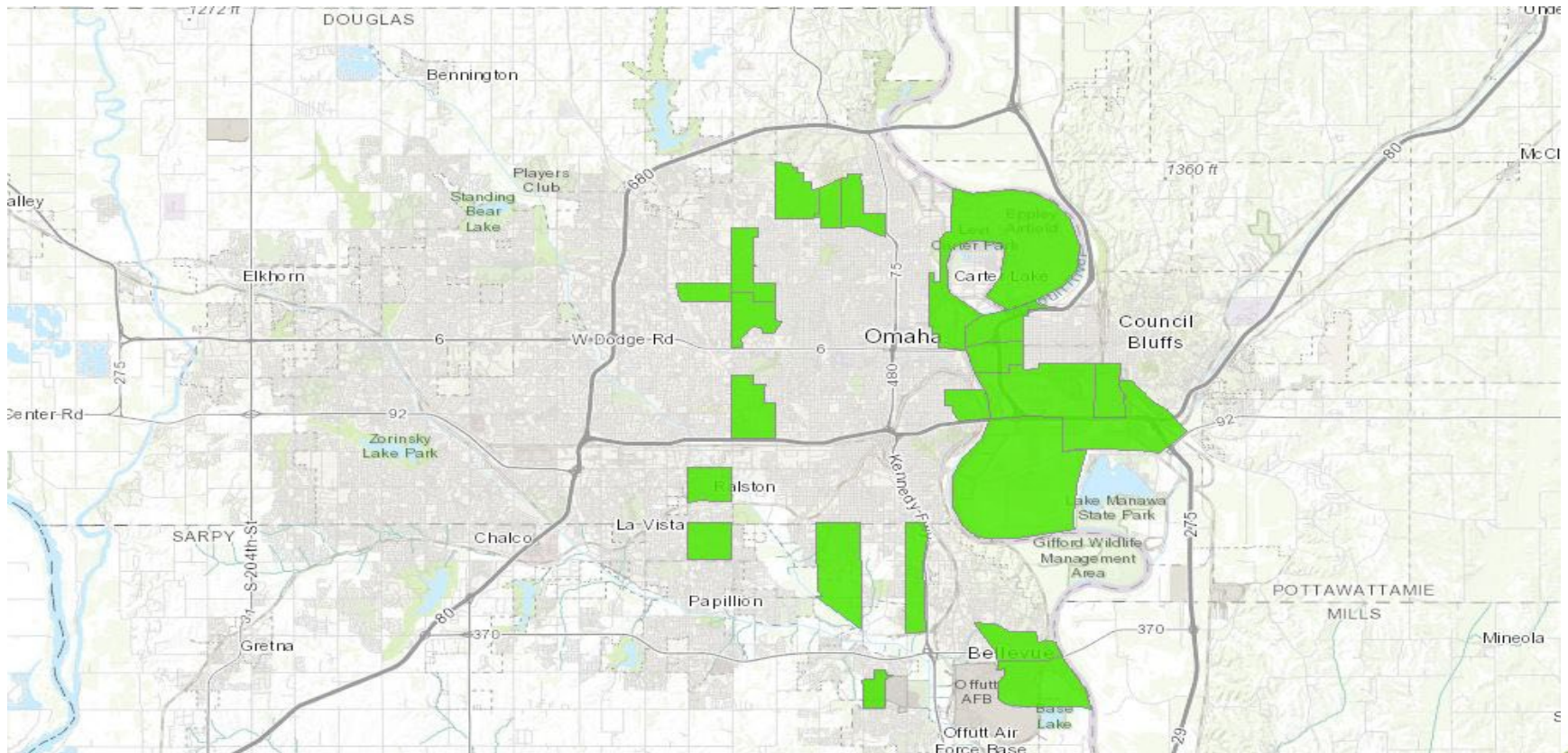


# Food Desert

*USDA – Economic Research Service*

Food Access Research Atlas

“Food Desert” now “low income and low access”







Natural  
Resources  
Conservation  
Service

[nrcs.usda.gov/](https://nrcs.usda.gov/)







“Food is the moral right of all who are born into this world.” – Dr. Norman E Borlaug







United States Department of Agriculture



Search...

DONATE

[About](#) [Our Work](#) [Resources](#) [Policy](#) [News](#) [Our Network](#) [Get Involved](#)



LEARN

*Find Information*



ACT

*Get started today*



CONNECT

*Find your state*



NEWS

*Visit our blog*

Farm to school enriches the connection communities have with fresh, healthy food and local food producers by changing food purchasing and education practices at schools and



Natural  
Resources  
Conservation  
Service

[nrcs.usda.gov/](https://nrcs.usda.gov/)





**priorities, specifically “Expanding conservation tools and support to address the unique needs of urban farmers and communities nationwide.”** With a growing emphasis on urban agriculture, NRCS staff may be asked to assist producers with implementing EQIP on land units for customers that might be new to NRCS or have been denied service in the past.

unfamiliar and smaller systems that are eligible for EQIP. Some EQIP myths are rooted in older versions of policy or law but are no longer true, and some are broad assumptions that warrant more clarity. The truths about these myths are farm size and location neutral, meaning they apply to all requests for EQIP assistance, regardless of location (urban or rural) or size (large or very small).

## MYTH 1

### **Agricultural Product Income** *(land and producer eligibility)*

**MYTH BUSTED!**

#### **THE MYTH:**

“The farm must produce at least \$1,000 of agricultural products to be designated as an agricultural operation and to be eligible for EQIP.”

#### **HERE’S THE TRUTH:**

There’s no minimum agricultural income requirement or agricultural product value requirement for determining land and/or producer eligibility.

People who produce food, fiber, livestock, or other agricultural products solely to provide for their families, friends, neighbors, and/or communities, and who do not sell, market, or distribute their products may be eligible for EQIP.







4

## Easy Steps to Get Started With FSA

### Jump-Start Your Farming or Ranching Operation With FSA

**Do you farm or ranch and want to grow your operation or make improvements?**

*The Farm Service Agency offers financial assistance to help farmers start a farm, expand their operation, improve natural resources or recover from natural disasters. Get started today to see how FSA can help you.*

1

**Contact Us**

Contact your local Farm Service Agency County Office to schedule an appointment. You can find your local county office online at <http://offices.usda.gov>.

2

**Bring Documents**

During your first visit, be sure to bring:

- ☐ Proof of identity (driver's license, social security card, IRS EIN number)
- ☐ Proof of Ownership (copy of recorded deed)
- ☐ Leases
- ☐ Entity Identification Status (articles of incorporation, trust & estate documents, partnership agreement)

3

**Consult With Us**

We will sit down with you one-on-one, review your documents and register your farm with FSA. Registering your farm allows you to apply for FSA programs. We then discuss what programs and loans are best to help you accomplish your goals. As a registered farm, you also will receive monthly newsletters, have access to various resources and be eligible to vote in FSA County Committee Elections.

4

**Apply**

After we determine your eligibility to participate in FSA programs and loans, we walk you through the application process. More information may be needed depending on the program.



Natural  
Resources  
Conservation  
Service

[nrcs.usda.gov/](http://nrcs.usda.gov/)





# Training staff on language tools.



## I Speak Statements

- |   |   |
|---|---|
| <input type="checkbox"/> Unë flas <b>shqip</b> (Albanian)           | <input type="checkbox"/> N' a po <b>Klào</b> Win. (Kru)           |
| <input type="checkbox"/> አማርኛ እናገራለሁ (Amharic)                      | <input type="checkbox"/> ຂ້າພະເຈົ້າເວົ້າ ພາສາລາວ. (Lao)           |
| <input type="checkbox"/> انا اتكلم اللغة العربية. (Arabic)          | <input type="checkbox"/> Yie gorngv <b>Mienh</b> waac. (Mien)     |
| <input type="checkbox"/> Ես խոսում եմ հայերեն (Armenian)            | <input type="checkbox"/> म <b>नेपाली</b> बोल्छु (Nepali)          |
| <input type="checkbox"/> আমি বাংলা ভাষী। (Bengali)                  | <input type="checkbox"/> Mówię <b>po polsku</b> . (Polish)        |
| <input type="checkbox"/> Ja govorim <b>bosanski jezik</b> (Bosnian) | <input type="checkbox"/> Eu falo <b>Portugês</b> . (Portuguese)   |
| <input type="checkbox"/> ကျွန်တော်ပြန်ဟောကားပြောသည်။ (Burmese)      | <input type="checkbox"/> ਇ ਸ੍ਪੇਆਕ ਪੰਜਾਬੀ (Punjabi)                |
| <input type="checkbox"/> 我说中文 (Chinese Simplified)                  | <input type="checkbox"/> Cunosc limba <b>Română</b> . (Romanian)  |
| <input type="checkbox"/> 我說中文 (Chinese Traditional)                 | <input type="checkbox"/> Я говорю <b>по-русски</b> . (Russian)    |
| <input type="checkbox"/> Ja govorim <b>hrvatski</b> . (Croatian)    | <input type="checkbox"/> Ou te tautala <b>faaSamoa</b> . (Samoan) |
|   | <input type="checkbox"/> Словенски (Slovenian)                    |





This form is available electronically.

(See Page 2 for Definitions.)  
(See Page 3 for Privacy Act and Paperwork Reduction Act Statements)

<b>CCC-860</b> (07-21-20)  <b>SOCIALLY DISADVANTAGED, LIMITED RESOURCE, BEGINNING AND VETERAN FARMER OR RANCHER CERTIFICATION</b>	<b>U.S. DEPARTMENT OF AGRICULTURE</b> Commodity Credit Corporation	
	1A. County FSA Office Name and Address (Including Zip Code)	
	1B. Telephone No. (Area Code)	1C. Program Year

2. Applicant's Name and Address  <div style="border: 1px solid black; height: 40px; width: 100%;"></div>	<b>INSTRUCTIONS:</b>  Complete Parts A, B, C and/or D as applicable. Read the information relating to false certification in Part E. Return this form to the address in Item 1 above.
--	---

**INFORMATION:** If a legal entity requests to be considered a "socially disadvantaged," "limited resource," "beginning" or "veteran" farmer or rancher, the entity must meet the definition as provided on Page 2 of this form. Farmer or rancher includes; "owners", "operators" and "other producers".

**PART A – CERTIFICATION OF SOCIALLY DISADVANTAGED FARMER OR RANCHER**

3. I certify that I am a member of a group listed below, whose members have been subject to racial, ethnic, or gender prejudice because of their identity as members of a group without regard to their individual qualities. (Check all that apply but note that if only "women" is checked without selecting the other category, the selection does not make the applicant socially disadvantaged for conservation programs).

☐ Women.

☐ American Indians or Alaskan Natives, Asians or Asian Americans, Black or African Americans, Native Hawaiians or other Pacific Islanders, Hispanics.

**PART B – CERTIFICATION OF LIMITED RESOURCE FARMER OR RANCHER**

Limited resource farmer or rancher status can be determined by using a web site available through the Limited Resource Farmer and Rancher Online Self-Determination Tool through National Resource and Conservation Service at <https://lrftool.sc.egov.usda.gov/>.

☐ 4. I certify that the following statements are true by checking the box:

My/our direct or indirect gross farm sales (as individuals, if applicable for the entity or joint operation) do not exceed the amount identified in the Limited Resource Farmer/Rancher Self-Determination Tool for the 2 calendar years that precede the complete taxable year before the relevant program year (see Table 1 on Page 2 of this form), adjusted upwards in later years for any general inflation.

My/our total household income (as individuals, if applicable for the entity or joint operation) was at or below the national poverty level for a family of four in each of the same 2 previous years (see Table 1 on Page 2 of this form) referenced above.

**PART C – CERTIFICATION OF BEGINNING FARMER OR RANCHER**
☐ 5. I certify that the following statements are true by checking the box and providing the date I began farming:

I (or if applicable, the entity or joint operation) have not operated a farm or ranch for more than 10 years.

I (or if applicable, the entity or joint operation) substantially participate in the operation.

Date (Month/Year began farming)

**PART D – CERTIFICATION OF VETERAN FARMER OR RANCHER**

6. I certify that I am a farmer or rancher who has served in the Armed Forces as defined in 38 U.S.C. 101(10) and I meet the requirements of at least one of the boxes below: (Check all that apply)

☐ A. I (or if applicable, the entity or joint operation) have not operated a farm or ranch for more than 10 years and began farming in

Date (Month/Year)

☐ B. I (or if applicable, the entity or joint operation) am a veteran (as defined in 38 U.S.C. 101(2)) who first obtained status as a veteran during the most recent 10-year period


Natural  
Resources  
Conservation  
Service

[nrcs.usda.gov/](https://nrcs.usda.gov/)



**AD-2047**  
(10-28-21)**U.S. DEPARTMENT OF AGRICULTURE**  
Farm Service Agency  
Rural Development  
Natural Resources Conservation Service  
Risk Management Agency  
Agricultural Marketing Service**CUSTOMER DATA WORKSHEET**

**NOTE:** The following statement is made in accordance with the Privacy Act of 1974 (5 USC 552a - as amended). The authority for requesting the information identified on this form is the Computer Security Act of 1987 (Pub. L. 100-235), OMB Circular A-123, Federal Managers' Financial Integrity Act of 1982, and Privacy Act of 1974 (5 USC 552a - as amended). The information will be used to document a request by the producer for updating the business partner record. The information collected on this form may be disclosed to other Federal, State, Local government agencies, Tribal agencies, and nongovernmental entities that have been authorized access to the information by statute or regulation and/or as described in applicable Routine Uses identified in the System of Records Notices for AMS-3, Perishable Agricultural Commodities Act (PACA), USDA/FSA-2, Farm Records File (Automated), USDA/NRCS-1, Landowner, Operator, Producer, Cooperator, or Participant Files, and USDA/RD-1, Applicant, Borrower, Grantee, or Tenant File. Providing the requested information is voluntary. However, failure to furnish the requested information will result in a determination of ineligibility to request changes within the business partner record.

**Public Burden Statement (Paperwork Reduction Act Statement):** According to the Paperwork Reduction Act of 1995, an agency may not conduct or sponsor, and a person is not required to respond to, a collection of information unless it displays a valid OMB control number. The valid OMB control number for this information collection is 0560-0265. The time required to complete this information collection is estimated to average 3 minutes (.05 hours) per response, including the time for reviewing instructions, searching existing data sources, gathering and maintaining the data needed, and completing and reviewing the collection of information.

The provisions of criminal and civil fraud, privacy and other statutes may be applicable to the information provided. **RETURN THIS COMPLETED FORM TO YOUR COUNTY FSA OFFICE.**

**PART A - CUSTOMER INFORMATION**

1. Reason for Request (Check appropriate box(es) below:)

☐ New Customer    ☐ Update Existing Customer Record
2A. Customer's Full Name or Business Name and Address  
(Including Zip Code)

2B. Customer Business Type (Example: Individual, Corporation, LLC, Estate, Trust, etc.)

2C. Home Telephone Number (Area Code)

2D. Business Telephone Number (Area Code)

2E. Mobile Telephone Number (Area Code)

2F. Email Address

2G. Does the customer want to receive sensitive (but non-PII) Producer or farm specific related emails?

☐ YES    ☐ NO

3A. Taxpayer Identification Number (Complete TIN for new customer or last 4 digits for existing customer) and Type (SSN, EIN, ITN, etc)

3B. Birthdate (Only required if the customer is a minor)

3C. Citizenship Status: (For Individuals Only)

3D. Originating Country (For Foreign Entities Only)

☐ U.S. Resident    ☐ Resident Alien (I-551 Required)  
☐ Not a US Citizen or Resident Alien

Citizenship country if not US:

**Demographic Information**

Departmental Regulation 4370-001 provides USDA's policies for collecting demographic data, including race, ethnicity and gender. Providing demographic information is voluntary and at the discretion of the customer. Demographic information is used by USDA for statistical purposes only and will not be used to determine an applicant's eligibility for programs or services for which they apply. You may disregard providing information in items 4A, 4B or 4C if the information has previously been provided to USDA. A customer identified in Item 2A that is a legal entity must base responses to the race, ethnicity and gender on the individual persons holding at least 50 percent ownership interest in the legal entity.

4A. Race: (Note: More than 1 may be selected)

☐ American Indian / Alaskan Native  
☐ Native Hawaiian/Other Pacific Islander  
☐ Asian  
☐ White  
☐ Black/African American  
☐ I do not want to provide Race

4B. Ethnicity:

☐ Hispanic or Latino  
☐ Not Hispanic or Latino  
☐ I do not want to provide Ethnicity information at this time.

4C. Gender (Individual):

☐ Male  
☐ Female  
☐ Non-Binary  
☐ I do not want to provide Gender information at this time.

4D. Gender (Legal Entity)

☐ Not applicable/unknown  
☐ Organization/Female Owned  
☐ Organization/Male Owned  
☐ Organization/Non-Binary  
☐ I do not want to provide Gender information at
Natural  
Resources  
Conservation  
Service

nracs.usda.gov/







# USDA LIMITED RESOURCE FARMER AND RANCHER FY2021 PROGRAM STATUS

**VERIFICATION DATE: 6/16/2022**

PLATTE, NEBRASKA

## INCOME DETERMINATION

**Gross Farm**

**Sales for 2018 and 2019:** is less than or equal to \$179,000 per year

**Adjusted Gross  
Income:**

is less than \$35,727

**Limited  
Resource  
Farmer/Rancher  
Status:**

Based on your answers to the two questions: You ARE ELIGIBLE to qualify as a Limited Resource Producer. You may be required to provide sufficient documentation to verify your claim.





## Get Started with NRCS

**Do you farm or ranch and want to make improvements to the land that you own or lease?**

Natural Resources Conservation Service offers technical and financial assistance to help farmers, ranchers and forest landowners.

### 1 Planning

**To get started with NRCS, we recommend you stop by your local NRCS field office.**

**We'll discuss your vision for your land.**

NRCS provides landowners with free technical assistance, or advice, for their land. Common technical assistance includes: resource assessment, practice design and resource monitoring. Your conservation planner will help you determine if financial assistance is right for you.

### 2 Application

**We'll walk you through the application process. To get started on applying for financial assistance, we'll work with you:**

- To fill out an AD 1026, which ensures a conservation plan is in place before lands with highly erodible soils are farmed. It also ensures that identified wetland areas are protected.
- To meet other eligibility certifications.

Once complete, we'll work with you on the application, or CPA 1200.

Applications for most programs are accepted on a continuous basis, but they're considered for funding in different ranking

### 3 Eligibility

**As part of the application process, we'll check to see if you are eligible.**

**To do this, you'll need to bring:**

- An official tax ID (Social Security number or an employer ID)
- A property deed or lease agreement to show you have control of the property; and
- A farm tract number.

If you don't have a farm tract number, you can get one from USDA's Farm Service Agency. Typically, the local FSA office is located in the same building as the local NRCS office. You only need a farm tract number if you're interested in financial assistance.

### 4 Ranking

**NRCS will take a look at the applications and rank them according to local resource**

concerns, the amount of conservation benefits the work will provide and the needs of applicants.

### 5 Implementing

**If you're selected, you can choose whether to sign the contract for the work to be done.**



Natural Resources Conservation Service

[nrcs.usda.gov/](https://nrcs.usda.gov/)



# NEW FARMERS

From farm loans to crop insurance, and conservation programs to disaster assistance, the U.S. Department of Agriculture (USDA) is here to support you and your operation.



## GET STARTED

Contact Your Beginning Farmer and Rancher Coordinator

Each State has a coordinator that can help you with questions on



Natural  
Resources  
Conservation  
Service

[nrcs.usda.gov/](https://nrcs.usda.gov/)





United States Department of Agriculture



United States  
Department of  
Agriculture

## USDA Office of Urban Agriculture and Innovative Production

### Reducing Food Waste

In the United States, over one-third of food goes uneaten through loss or waste. When food is tossed aside, so too are opportunities for improved food security, economic growth, and environmental prosperity. USDA is uniquely positioned to help address the problem of food loss and waste through its programs, policies, and guidance.

### Community Compost and Food Waste Reduction Projects

The USDA Office of Urban Agriculture and Innovative Production awards cooperative agreements through an annual competitive process. The agreements assist local and municipal governments with projects that develop and test strategies for planning and implementing municipal compost plans and food waste reduction plans. Implementation activities increase access to compost for agricultural producers, improve soil quality and encourages innovative, scalable waste management plans that reduce and divert food waste from landfills.

### Who is Eligible?

Municipalities, counties, local governments, State and federally recognized tribes, or city planners in the United States are eligible.

### Learn More

More information, including a webinar, Frequently Asked Questions, and news release, is available at [farmers.gov/urban](https://farmers.gov/urban).



### USDA's Office of Urban Agriculture and Innovative Production

was formed through the 2018 Farm Bill to improve USDA's support for urban and innovative farming operations.

The office manages competitive grants and cooperative agreements.

A new federal advisory committee on urban agriculture and innovative production and new Farm Service Agency urban and suburban county committees provide the public an opportunity to have input on USDA programs and services.



At left, Metro Atlanta Urban Farm (MAUF) CEO Bobby Wilson talks with USDA's Natural Resource Conservation Service (NRCS) District Conservationist Shemekia Mosley, State Public Affairs Officer Chris Groskreutz and Farm Service Agency (FSA) Beginning Farmer Regional Coordinator Rodney Brooks about future opportunities on his farm.

USDA Photo by Preston Keres prior to the COVID-19 pandemic.



Natural  
Resources  
Conservation  
Service

[nrcs.usda.gov/](https://nrcs.usda.gov/)



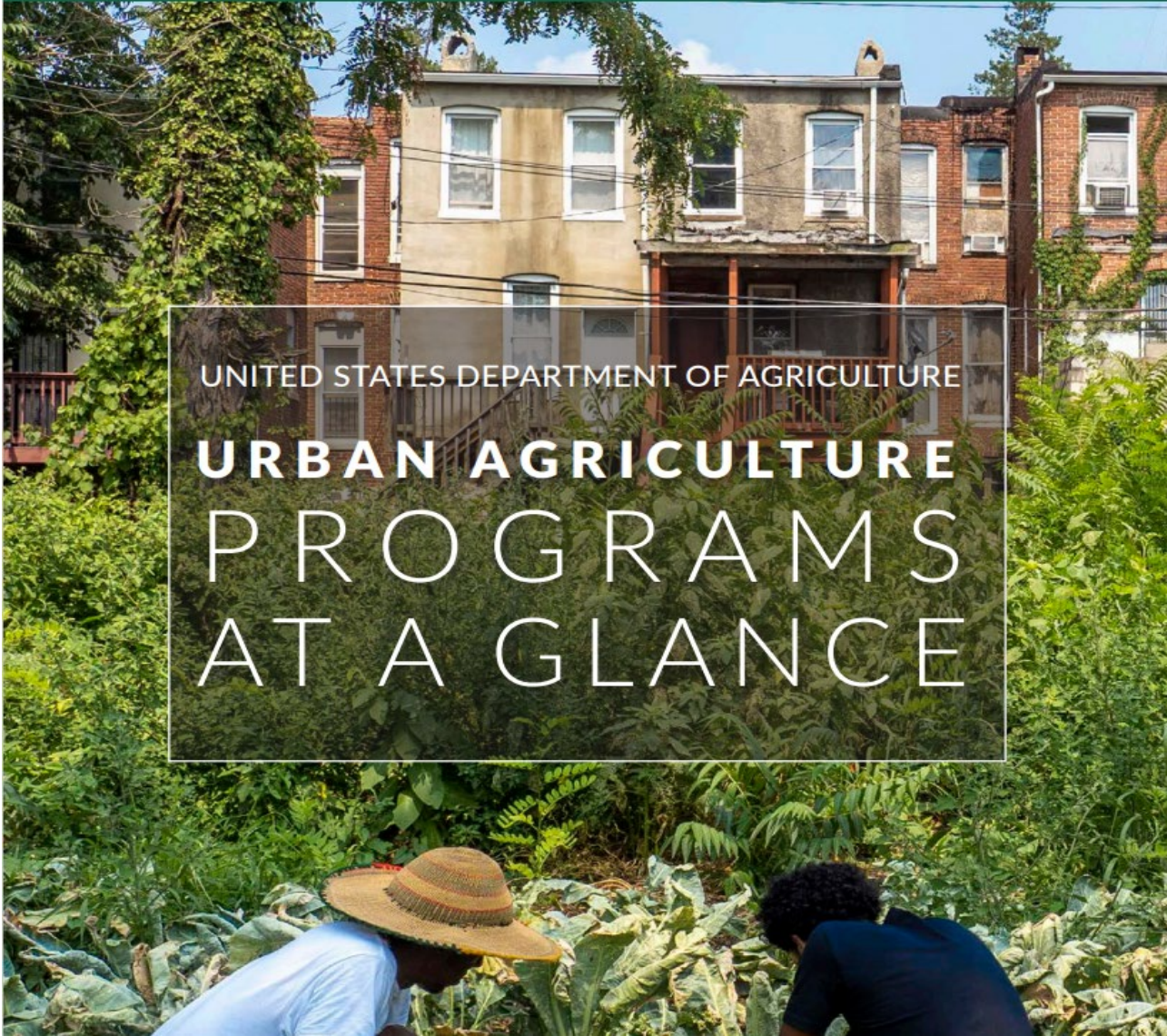




United States Department of Agriculture



U.S. DEPARTMENT OF AGRICULTURE



UNITED STATES DEPARTMENT OF AGRICULTURE

# URBAN AGRICULTURE PROGRAMS AT A GLANCE



Natural  
Resources  
Conservation  
Service

[nrcs.usda.gov/](https://nrcs.usda.gov/)





# NRCS AND URBAN AGRICULTURE

## Who We Are

USDA's Natural Resources Conservation Service helps farmers care for the natural resources on their land – soil, water, air, plant and animals.

## How We Help Urban Farmers

NRCS provides technical and financial assistance to growers in:

- **Soil Health** - As experts in soil health, NRCS conservationists can advise urban growers on things like what cover crops to grow, using farmers' soil tests and our soil surveys.
- **Irrigation and Water Conservation** - We can help urban growers conserve water, by assisting with things like drip irrigation.
- **Weeds and Pests** - We can help with pest and weed management by planting buffers for beneficial insects, through mulching, using cover crops and various other means.
- **High Tunnels** - NRCS can provide financial assistance for high tunnels, used to extend the growing season and to protect plants from harsh weather, air pollution and pests. By making local produce available for more months in the year, fewer resources are used to transport food to plates.



Natural  
Resources  
Conservation  
Service

[nrcs.usda.gov/](https://nrcs.usda.gov/)

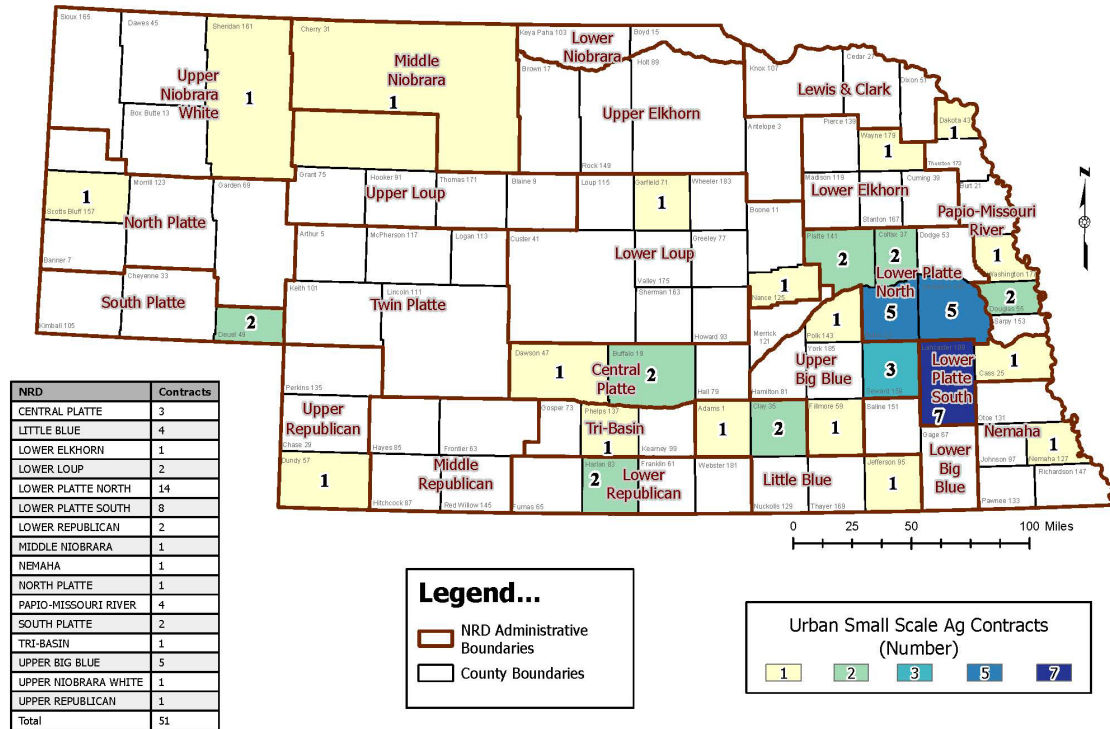




Conservation Practices	Count	Obligation
325 -High Tunnel System	47	\$599,693
821 -Low Tunnel Systems	6	\$71,910
533 -Pumping Plant	8	\$43,268
642 -Water Well	8	\$37,975
441 -Irrigation System, Microirrigation	21	\$36,337
430 -Irrigation Pipeline	12	\$22,835
808 -Soil Carbon Amendment	5	\$17,412
317 -Composting Facility	1	\$15,257
558 -Roof Runoff Structure	1	\$15,088
340 -Cover Crop	31	\$8,756
561 -Heavy Use Area Protection	9	\$6,831
570 -Stormwater Runoff Control	3	\$6,384
636 -Water Harvesting Catchment	3	\$5,790
590 -Nutrient Management	3	\$5,589
595 -Pest Management Conservation System	3	\$5,247
560 -Access Road	1	\$4,885
327 -Conservation Cover	7	\$4,413
612 -Tree/Shrub Establishment	1	\$3,364
216 -Soil Health Testing	8	\$2,104
380 -Windbreak/Shelterbelt Establishment and Renovation	3	\$1,758
490 -Tree/Shrub Site Preparation	1	\$567
342 -Critical Area Planting	6	\$386
420 -Wildlife Habitat Planting	1	\$354
338 -Prescribed Burning	1	\$117
315 -Herbaceous Weed Treatment	1	\$16
<b>Grand Total</b>	<b>191</b>	<b>\$916,336</b>



# Urban Small Scale Ag Contracts (FY 2023)







United States Department of Agriculture

Questions?

Brach Johnson

Urban Conservationist

USDA-NRCS, Nebraska

[Brach.johnson@usda.gov](mailto:Brach.johnson@usda.gov)

Phone: 402-239-6633



Natural  
Resources  
Conservation  
Service

[nrcs.usda.gov/](https://nrcs.usda.gov/)

