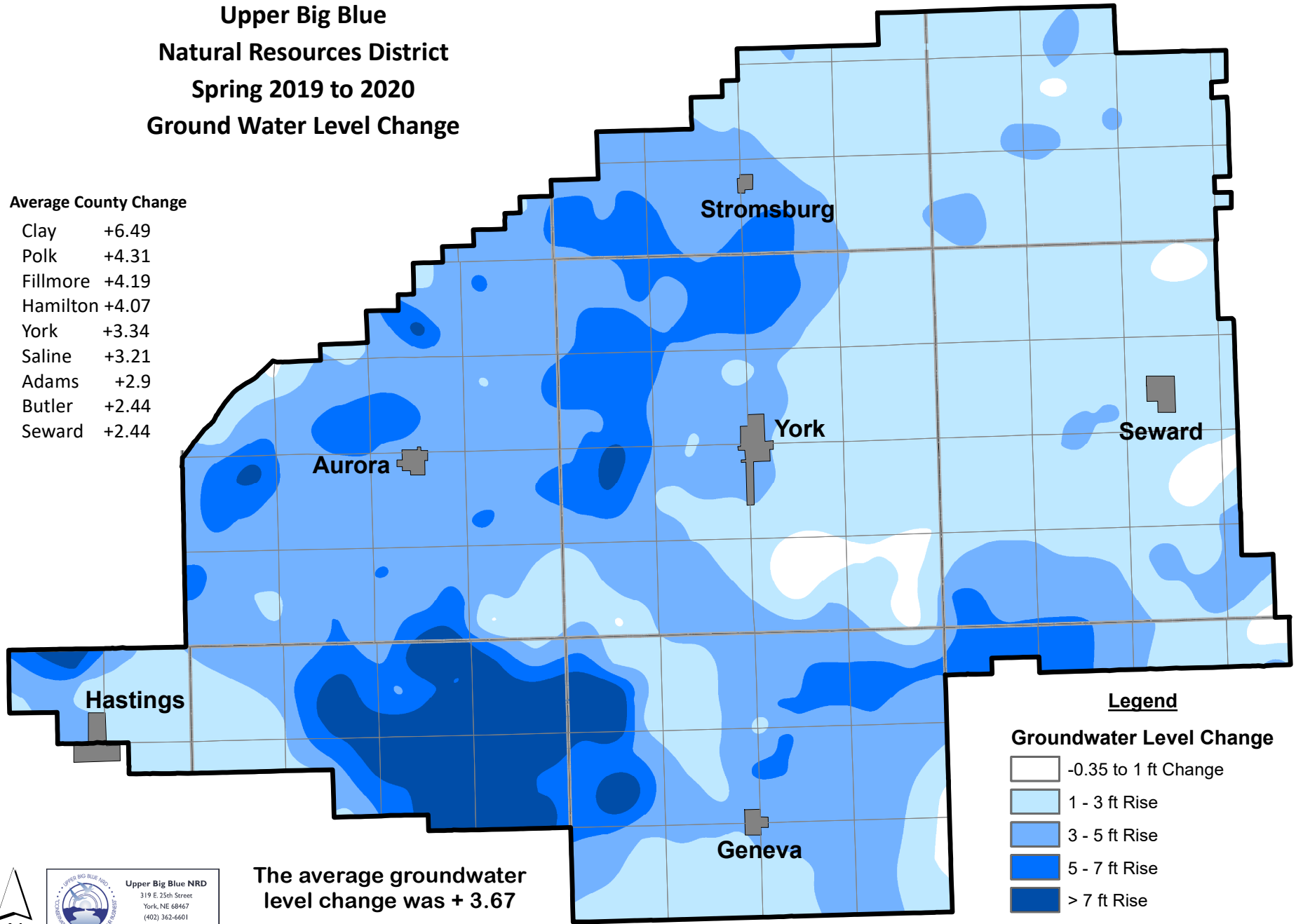


**Upper Big Blue
Natural Resources District
Spring 2019 to 2020
Ground Water Level Change**

Average County Change

Clay	+6.49
Polk	+4.31
Fillmore	+4.19
Hamilton	+4.07
York	+3.34
Saline	+3.21
Adams	+2.9
Butler	+2.44
Seward	+2.44



Legend

Groundwater Level Change

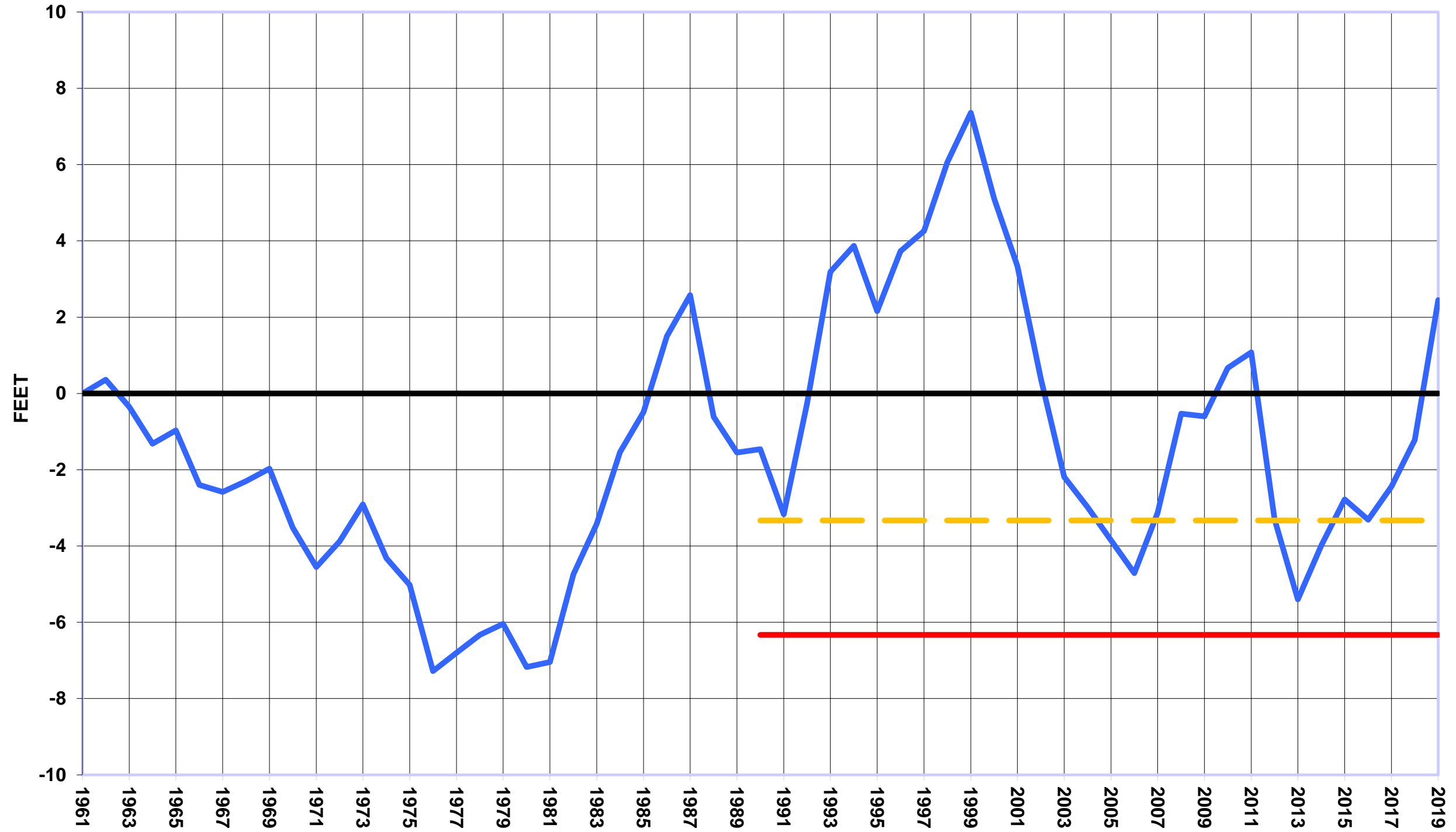
- 0.35 to 1 ft Change
- 1 - 3 ft Rise
- 3 - 5 ft Rise
- 5 - 7 ft Rise
- > 7 ft Rise
- County Lines

The average groundwater level change was + 3.67



Upper Big Blue NRD
319 E. 25th Street
York, NE 68467
(402) 362-6601
www.upperbigblue.org

**UPPER BIG BLUE NRD - AVERAGE GROUND WATER LEVELS
TRIGGERS COMPARED TO HISTORIC LEVELS
SPRING 2020**

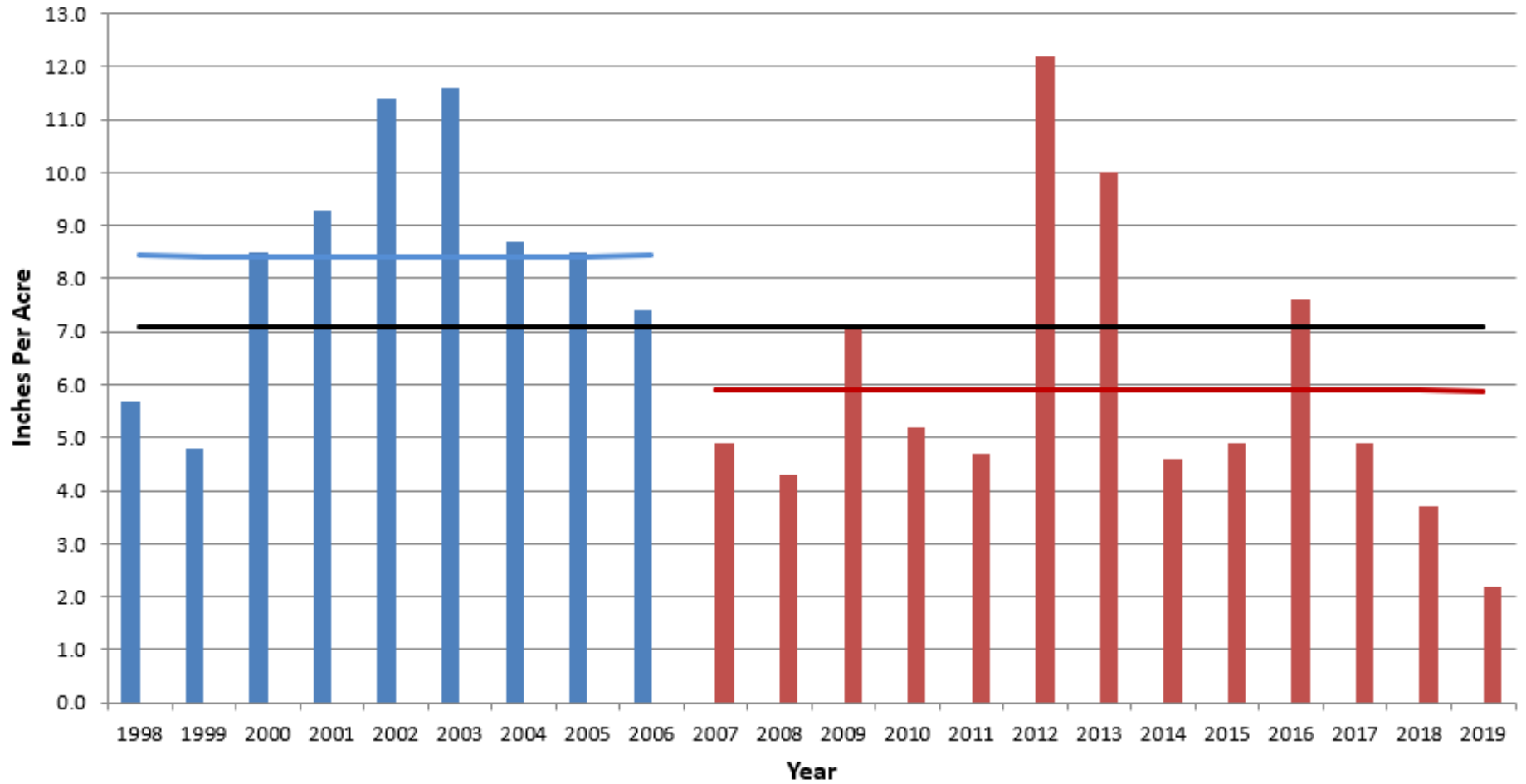


- Cumulative Change
- Allocation Trigger
- - - Reporting Trigger

The Spring 2020 ground water level change was a rise of 3.67 feet. The average level is 8.78 feet above the "Allocation Trigger".

Upper Big Blue NRD

Historic Groundwater Withdrawal for Irrigation



■ Cost-share Reports

■ Withdrawal Reports

— District Average Withdrawal

— Cost-share Avg.

— Withdrawal Average