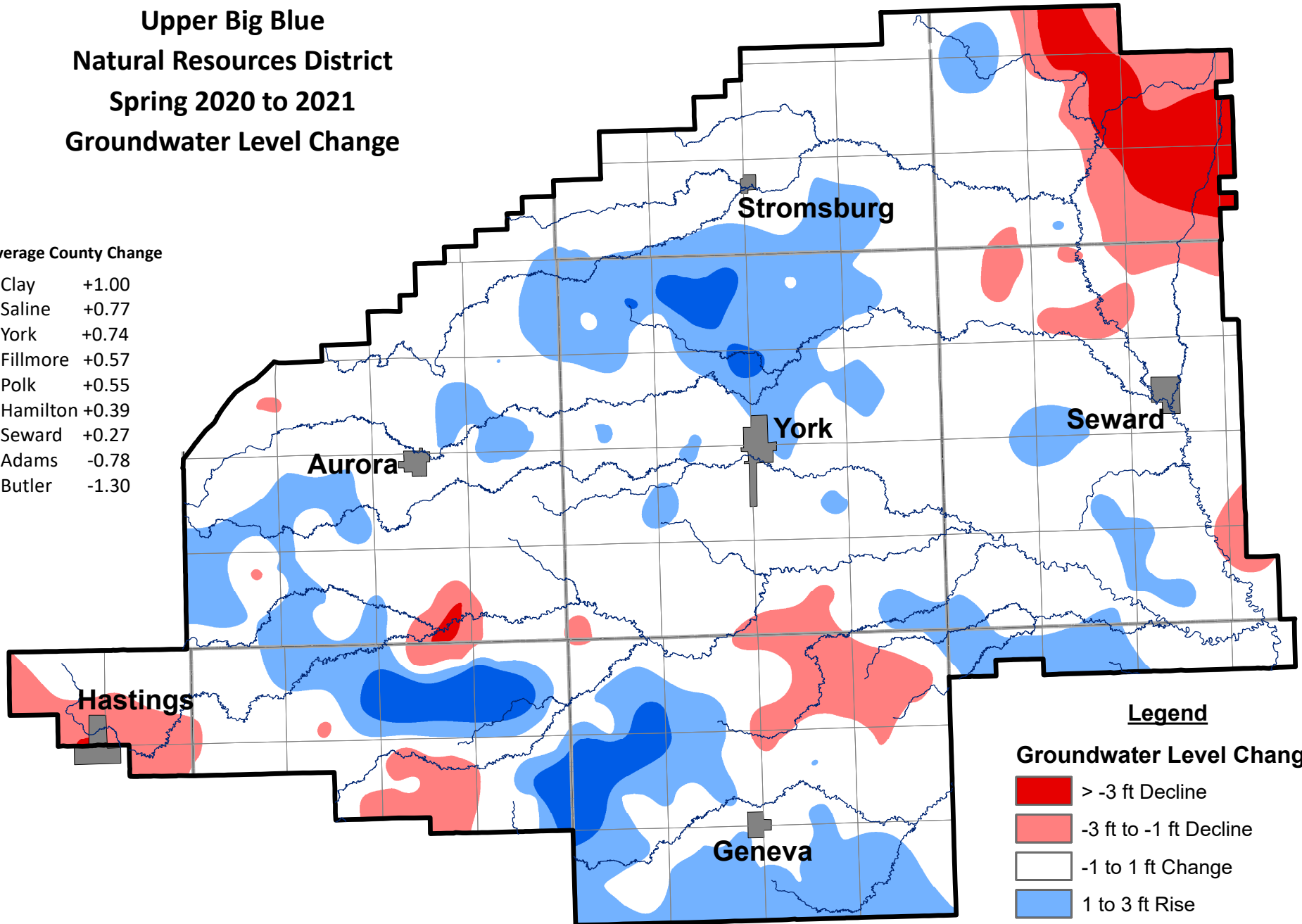


**Upper Big Blue  
Natural Resources District  
Spring 2020 to 2021  
Groundwater Level Change**

**Average County Change**

Clay	+1.00
Saline	+0.77
York	+0.74
Fillmore	+0.57
Polk	+0.55
Hamilton	+0.39
Seward	+0.27
Adams	-0.78
Butler	-1.30



**Legend**

**Groundwater Level Change**

- > -3 ft Decline
- 3 ft to -1 ft Decline
- 1 to 1 ft Change
- 1 to 3 ft Rise
- > 3 ft Rise

- Rivers
- County Lines

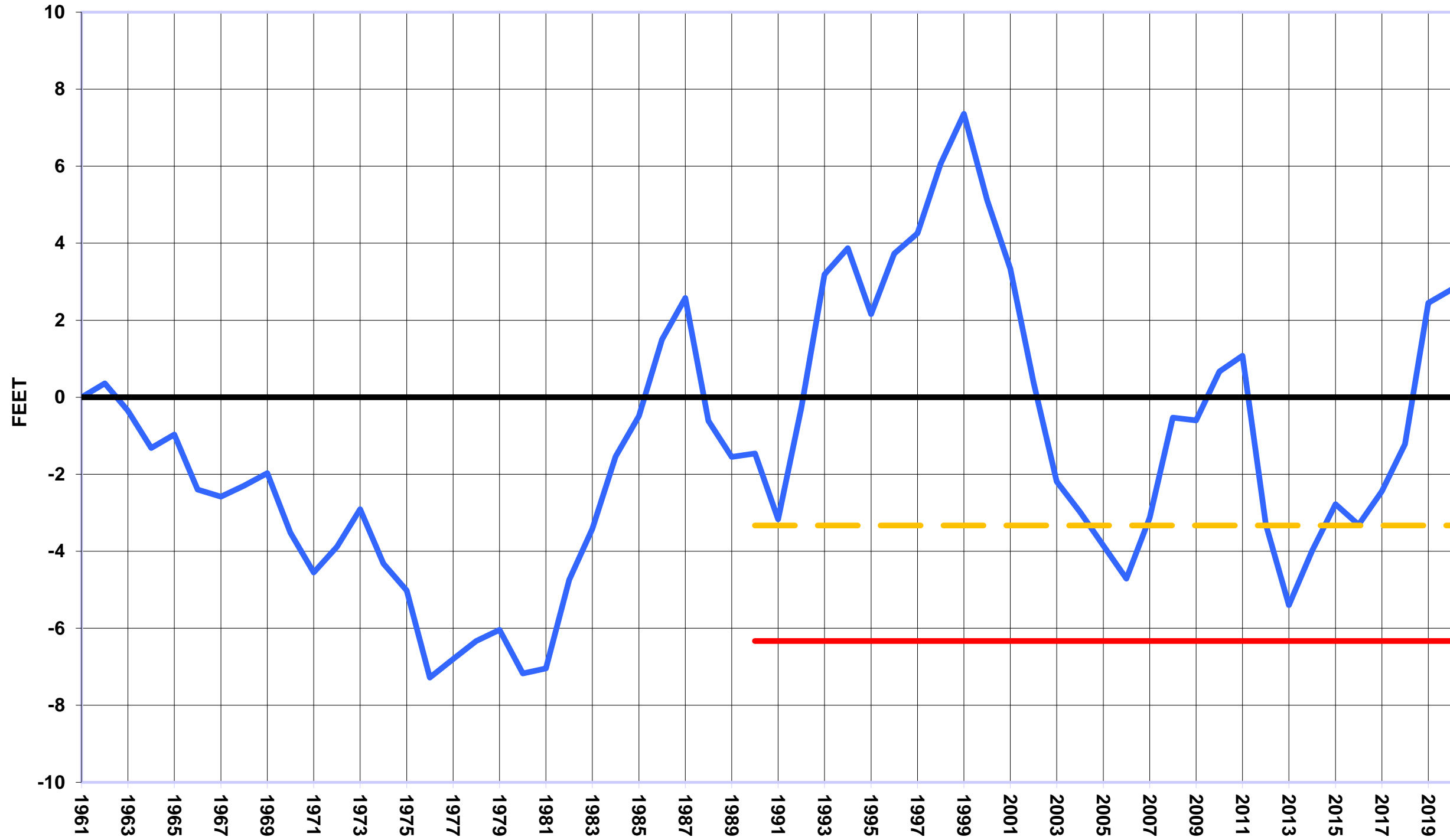
**The average groundwater level change was + 0.35 Feet**



**Upper Big Blue NRD**  
319 E. 25th Street  
York, NE 68467  
(402) 362-6601  
www.upperbigblue.org



**UPPER BIG BLUE NRD - AVERAGE GROUND WATER LEVELS  
TRIGGERS COMPARED TO HISTORIC LEVELS  
SPRING 2021**



- Cumulative Change
- Allocation Trigger
- - - Reporting Trigger

The Spring 2021 ground water level change was a rise of 0.35 feet. The average level is 9.13 feet above the "Allocation Trigger".